



Joslyn Art Museum

2 0 0 5 A N N U A L R E P O R T



YEAR AT A GLANCE

- 239,334 visited Joslyn Art Museum.
- 76 works of art were acquired by Joslyn Art Museum through gift or purchase in the following areas: American (4); Asian (10); Modern and Contemporary (13); Ancient (20); and European (29).
- 35 works of art were lent by Joslyn to other institutions (Petah Coyne's *Untitled #1165 (Paris Blue)* was lent twice: once to Galerie Lelong (New York, NY) and once to Nasher Museum of Art at Duke University (Durham, NC).
- 47 works of art were lent by other institutions and individuals to Joslyn's permanent collection.
- 8 special exhibitions were on view at the Museum.
- 35,792 attended tours, lectures, gallery talks, special programs for adults, art classes, camps, and other programs at Joslyn.
- The Museum ended the year with 18,075 memberships.
- 53,217 attended music programs at Joslyn.
- 93,178 participated in Joslyn outreach programs.
- There were 18,247,651 "hits" on the Museum's primary website, www.joslyn.org. There were 341,845 "hits" on the Museum's website for kids, kids.joslyn.org. There were 765,944 "hits" on the Museum Shop's website, shop.joslyn.org.
- Volunteers logged 3,684 hours of service for the Museum's Art Reference Library, Museum Shop, Membership, Education (including the docent program), and Marketing & Public Relations departments (including music series).
- Joslyn Art Museum receives numerous requests from around the world for images of art works from its permanent collection. These images are used in textbooks, exhibition catalogues, books, and other publications; featured on posters, cards, and calendars; and used in films, videos, or television programs. Of the images requested, 60% were of works by Karl Bodmer. One of these requests was from the Mandan, Hidatsa, and Arikara Nation, also known as the Three Affiliated Tribes, which received permission for a tribal artist to copy Karl Bodmer's portrait of the Mandan chief, Mató-Tópe (Four Bears), in a 20 x 14 foot image on its tribal water tower.

Annual Report
January 1 - December 31, 2005

Joslyn Art Museum
2200 Dodge Street
Omaha, Nebraska 68102-1292

Telephone 402-342-3300
Facsimile 402-342-2376
www.joslyn.org

Museum Hours
Tuesday-Saturday 10 am-4 pm
Sunday noon-4 pm
Closed Monday and major holidays.
Extended hours for some special exhibitions.

Museum Admission
\$6 adults; \$4 senior citizens (62+) and college students (with ID); \$3.50 ages 5-17; free for children ages four and younger and Joslyn members. Group rates available. Public admitted free Saturdays 10 am-noon, funded by a grant from the Peter Kiewit Foundation. Additional charge for some special exhibitions.

ON THE COVER, TOP TO BOTTOM: Pablo Picasso, *Profile of Jacqueline with a scarf* (detail), 1955, linoleum cut, Marina Picasso Collection, courtesy Jan Krugier Gallery, New York; Sir Thomas Lawrence (English, 1769-1830), *Portrait of Sir Samuel Shepherd, (1760-1840)* (detail), 1796, oil on canvas, Museum purchase with funds provided by the Berchel H. and Alice Dale Harper Estate; Boris Grigoriev, *Portrait of Vsyevolod Meyerhold* (detail), 1916, oil on canvas, Collection of the State Russian Museum, St. Petersburg; Chinese, Qing, 1644-1911, Kangxi Reign (1662-1722), *Eight-Panel Screen* (detail), early 18th century, carved red lacquer, gold inlaid brown lacquer, wood, Partial gift of Mr. Anunt Hengtrakul and Museum Purchase with funds from the Peter Kiewit Foundation

YEAR IN REVIEW



This was a great year for Joslyn Art Museum, punctuated by major exhibitions of contemporary art, important prints, and works from Russia; permanent collection growth, especially a major acquisition in the area of Asian art; new educational programs; and new curatorial leadership.

We began the exhibition year bidding farewell to the treasures comprising *Renaissance to Rococo*, an exhibition of 60 Old Master works from the Wadsworth Atheneum Museum of Art. The show enjoyed brisk attendance, with a total of 74,957 visitors taking in the exhibition.

With spring came a shift to new works by two major contemporary artists, Stan Douglas of Canada and Dirk Skreber of Germany. Making its American premiere at Joslyn, *Stan Douglas: Inconsolable Memories* featured a new film work that was shown later in the year at the famed Venice Biennale, and a series of photographs made during the artist's recent trips to Cuba. Best known for his large-scale figurative paintings that explore the tensions between subject matter and material, German painter Dirk Skreber exhibited new canvases in *Dirk Skreber: Na(h)tanz 2.0*. This show at Joslyn was Skreber's first one-person museum show in the U.S.

In June, Joslyn was honored to present *Mir Iskusstva: Russia's Age of Elegance*, featuring paintings from Russia's World of Art movement never before seen in the U.S. from the State Russian Museum in St. Petersburg. Attended by 100,315 visitors, *Russia's Age of Elegance* represented a continuation of Joslyn's collaboration with Russian museums that began in 2003. A variety of exhibition-related programming included a Gala preview and a members opening with special guests Yevgenia Petrova, Deputy Director of the State Russian Museum, St. Petersburg; Alexander Vershbow, U.S. Ambassador to the Russian Federation; and Lisa Vershbow, his wife and an artist/jewelry designer whose work was featured in a related exhibition, *Four Years in Russia*.

Later in the year, Joslyn's international partnership with Russian museums continued with an exchange of children's art. In celebration of the new Children's Center at Moscow's State Pushkin Museum of Fine Arts, the Pushkin displayed art created by Joslyn Art School students, ages 7-12, on the subject of war and peace in art. Coming next year to Joslyn will be an exhibition of works created by Russian children at the Pushkin.

In July, Joslyn celebrated 21 years of the ever-popular free outdoor summer concert series *Jazz on the Green*. The series was expanded from the usual six concerts to eight, and included a concert by the Igor Butman Quartet, booked for the series in conjunction

with *Russia's Age of Elegance*. Traveling all the way from Moscow, world-renowned jazz saxophonist Igor Butman, Russia's top jazz personality, and his quartet delivered an outstanding, energy-charged performance that concert-goers will not soon forget. Also on view during the series was *Frederick J. Brown: Portraits of Music I Love*, an exhibition of 24 paintings from this prolific and celebrated African-American artist's *Jazz and Blues* series.

Exceptional print exhibitions concluded the year, with *Picasso: Master Printmaker* and *Out of the Wild: John James Audubon's Four-Legged Mammals of North America* opening in October. *Picasso* featured more than 90 superb and rare prints by celebrated 20th-century artist Pablo Picasso from the collection of Marina Picasso, the artist's granddaughter. The exhibition was ushered in with a Director's Preview with special guest Emmanuel Benador, Director of the Prints Department at Jan Krugier Gallery, New York. Benador is considered one of the world's foremost experts on Picasso prints. The *Out of the Wild* exhibition featured select works from a set of 150 superbly rendered and beautifully printed John James Audubon prints acquired by the Museum in 2004. These hand-colored lithographs comprise *The Viviparous Quadrupeds of North America* series, Audubon's second, equally ambitious project, following his monumental masterpiece, *The Birds of America* series.

Also, Joslyn announced that beginning with the 2005-06 school year, all Omaha Public Schools student groups visiting the Museum for tours of the collection or special exhibitions will receive free admission. The Museum is proud to ensure that these students and teachers in Nebraska's largest, most culturally, economically, and socially diverse district will have Joslyn as a resource, free of charge.

Joslyn's national search for a senior level curator concluded with the hiring of Dr. John Wilson as Director of Curatorial Affairs/Curator of European art. John was a consultant and independent curator and served as consultative curator of painting and sculpture for Cincinnati's Taft Museum of Art before arriving at Joslyn in the fall. From 1990 to 1999 he was the Curator of Painting and Sculpture at the Cincinnati Art Museum. His wealth of varied experience in all aspects of museum and art management has made him a great asset to the Museum.

Joslyn reopened its gallery of Asian art following the "three Rs" treatment — reinstallation, reorganization, and reinvigoration — by Dr. John K. Fong, Joslyn's Adjunct Curator of Asian Art. While Chinese art is the focus, works from Japan and Southeast Asia, among others, are featured. Many of the objects are recent gifts or loans to the Museum from local and national collectors and from Dr. Fong himself and on view for the first time. Dr. Fong spoke at a special event in April celebrating the reinstallation.

An exciting addition to the Asian collection came at the end of the year. A spectacular early 18th-century Chinese eight-panel screen was a partial gift of prominent East Coast collector Mr. Anunt Hengtrakul and a Museum purchase with funds from the Peter Kiewit Foundation. The screen is extremely rare because of its material (carved red lacquer), its size (more than six feet high and ten feet long), its degree of technical difficulty, and its remarkable quality. This impressive screen will be introduced to the public in a 2007 exhibition.

Other notable additions to Joslyn's permanent collection include Sir Thomas Lawrence's 1796 work *Portrait of Sir Samuel Shepherd, (1760-1840)*, a Museum purchase with funds provided by the Berchel H. and Alice Dale Harper Estate. It is the first painting by this great British portrait painter to enter the collection. To the American West collection was added Albert Bierstadt's *Indian Camp in the Rocky Mountains*, a small-scale oil painting on paper mounted on wood panel from the 1880s — a gift of B. J. Birmingham; stellar coins from the region that is modern-day Sicily, Italy, were added to the collection — a gift from Richard A. Jourdan; and seven important prints from European and American printmakers such as Raimondi, Lucas, and Pennell were a gift from the Getscher-Wilkinson Collection.

The recent Joslyn publication, *Karl Bodmer's North American Prints*, was awarded the Western History Association's 2005 Joan Paterson Kerr Book Award for best illustrated book on the American West. Called "absolutely gorgeous" and "intellectually and visually stimulating" by award committee members, this 2004 volume is a comprehensive study of Bodmer's prints and a companion volume to *Karl Bodmer's America*, the 1984 publication that reproduced the full range of Karl Bodmer's watercolors and sketches at Joslyn.

In related Maximilian-Bodmer Collection news, Joslyn's archival holdings include German Prince Maximilian of Wied's journals, careful records of his and Swiss artist Karl Bodmer's pioneering expedition across North America and up the Missouri River in 1832-34. Joslyn plans to publish a three-volume translation of the journals, and through generous gifts made by Charles H. Durham and Rhonda and Howard Hawks, the Museum expects to complete the project in 2010.

The Young Art Patrons (YAP) group was formed to offer dynamic arts-related programs to art admirers between the ages of 25 and 40 and to expand the cultural influence of these young professionals in the Omaha area. Following a kick-off event in May, YAP enjoyed social and educational events throughout the year.

The Contemporary Art Society (CAS) and Bodmer Society each enjoyed a fruitful year of noteworthy programs and events. In March, artists Stan Douglas and Dirk Skreber were special guests at the CAS annual

dinner, and members enjoyed an evening with artist Fred Brown in June. Joslyn's collection of 20th- and 21st-century art was off view for several months in 2005 to accommodate the *Renaissance to Rococo* exhibition, so CAS celebrated its return to the Scott Pavilion galleries with an event in April with special guest Richard Weisman, a world-renowned art collector. In September, the Bodmer Society welcomed Dr. Gary E. Moulton, Thomas C. Sorensen Professor of American History at the University of Nebraska-Lincoln, who, with a team of select scholars, has been editing Prince Maximilian's journals for publication. The group enjoyed a preview of the publication. Also in September, the Bodmer Society's annual *rendezvous!* dinner featured Audubon print expert Bill Steiner as special guest. In the fall, Thomas Moran expert Dr. Joni Kinsey, Associate Professor of American Art at the University of Iowa, spoke to the group about the latest Joslyn publication she is authoring, *Thomas Moran's West*, which will be available early 2006.

Joslyn's Criss Center for Education introduced two new programs this year. *Visualizing Literature: Book Club for Art Lovers*, in partnership with The Nebraska Medical Center's Health & Wellness Club, is a series of moderated book discussions designed to explore connections between the literary and visual arts. *CU at Joslyn*, offered in partnership with Creighton's University College, is a free Saturday morning lecture series presented by Creighton University faculty at Joslyn, featuring a mélange of fascinating topics, each linked in some way to Joslyn's building, collections, or exhibitions.

The Exploration Station was given an exciting new look and a new name — Kids Can Do Art. Kids and families alike have been delighted to find this new hands-on center: an over-sized "can" filled with giant art tools (a paint brush, ruler, pencils) that opens to reveal a hands-on art activity, books, and games related to artwork on view in the galleries.

The Board of Governors welcomed four new members: Kirk Kellner, Nebraska Regional President, Wells Fargo Bank, N.A.; Melissa Marvin, Director of Performance Results Network for Cohen Brown Management Group, Inc.; Daniel Neary, Chairman & CEO of Mutual of Omaha Insurance; and James Young, President & CEO of Union Pacific Railroad.

Financially, the Museum ended the year with a balanced budget. I invite you to review the departmental information and financial data contained in this report. I thank Board Chairman Mike Yanney, the entire Board of Governors, the Joslyn Art Museum Associations of Omaha and Southwest Iowa, Joslyn staff, and our donors, members, and volunteers for a wonderful year.

J. Brooks Joyner
Director

BOARD OF GOVERNORS

Executive Committee

Michael B. Yanney
Chairman

John E. Gottschalk
Vice Chairman

Bruce R. Lauritzen
Secretary

David A. Rismiller
Treasurer

Charles F. Heider
John P. Nelson
John P. Schlegel, S.J.
Walter Scott
Frederick J. Simon
Nancy C. Webster

Marian Andersen
Robert D. Bates
Cynthia Bay
Susan A. Buffett
Louis Burgher, M.D., Ph.D.
Susan Butler
Barbara Call
J. Brad Chapman
Sylvia B. Cohn
Mary Daugherty
William Donaldson
Admiral James O. Ellis, Jr.,
USN
Marshall Faith
Terrence J. Ferguson
Rex Fisher
Sue Fletcher
Norma Fuller
Wayne Gary Gates
Elinor Greenfield
Sharon Griffin
Marianne Hawkins
Howard L. Hawks

G. Woodson Howe
David Jacobson
Mary Landen
Joan Masterson
Frank Matthews
Beverly Maurer
Jack R. McDonnell
Cynthia McGowan
Terry Moore
Diane Nelson
Rubens J. Pamies, M.D.
Lenore Polack
J. Joe Ricketts
Karen Riley
Thompson Rogers
Suzanne Scott
William S. Singer, M.D.
Ann Stinson
Allan Tubach
David Wiesman
Philip J. Willson
John K. Wilson

Harold W. Andersen
Governor Emeritus

Carr Heaney
Legal Counsel
Lamson, Dugan & Murray

EXHIBITIONS

Exhibitions organized by Joslyn, or in collaboration with Joslyn, are denoted with an asterisk (*).

*Stan Douglas: Inconsolable Memories**

March 19 - May 15

*Dirk Skreber: Na(h)tanz 2.0**

March 19 - May 15

Mir Iskusstva: Russia's Age of Elegance

June 4 - September 14

Four Years in Russia

June 4 - November 27

Frederick J. Brown: Portraits of Music I Love

June 11 - September 4

*Picasso: Master Printmaker**

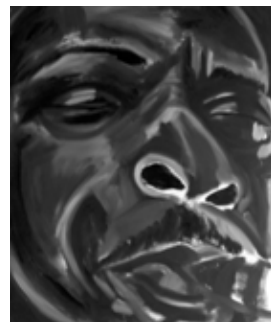
October 1 - December 31

*Out of the Wild: John James Audubon's
Four-Legged Mammals of North America**

October 1 - December 31

*Thomas Moran's West: The Yellowstone Suite**

December 24 - April 9 (2006)



CREDITS ABOVE: (LEFT COLUMN, TOP TO BOTTOM) Stan Douglas, *Rooftops, Habana Vieja*, 2004, C-print mounted on 1/4 inch honeycomb aluminum, Courtesy David Zwirner, New York; Dirk Skreber, *It rocks us so hard, Ho, Ho, Ho 7.0*, 2003, oil on canvas, Olbricht Collection, Essen, Germany; Boris Grigoriev, *Portrait of Vsevolod Meyerhold*, 1916, oil on canvas, Collection of the State Russian Museum, St. Petersburg (RIGHT COLUMN, TOP TO BOTTOM) Frederick J. Brown, *Coleman Hawkins*, 1997, oil on canvas, Pearson Art Foundation; Pablo Picasso, *Profile of Jacqueline with a scarf*, 1955, linoleum cut, Marina Picasso Collection, courtesy Jan Krugier Gallery, New York; John James Audubon, *Common American Wild Cat*, Plate I from *The Viviparous Quadrupeds of North America*, 1845-48, hand-colored lithograph, Collection of Joslyn Art Museum

COLLECTIONS

Acquisitions

Gifts include those to Joslyn Art Museum and its supporting foundation.

Paintings

Gift of

Jo Anderson

Signe Stuart (American, born 1937), *Breath III*, 2001, triptych: acrylic on embroidered canvas and plex (2005.6.a-c)

B.J. Birmingham

Albert Bierstadt (American, born Germany, 1830-1902), *Indian Camp in the Rocky Mountains*, ca. 1880s, oil on paper mounted on wood panel (2005.24)

Dr. Thomas Huerter

Xenia Hausner (Austrian, born 1951), *The Bartered Bride* (*Die verkaufte Braut*), 1998, acrylic on fiberboard (2005.9)

Gift of Dr. Thomas Huerter and Museum Purchase with funds from Patron Circle for Contemporary Art

Odd Nerdrum (Norwegian, born 1944), *Blue Self-Portrait*, 1997, oil on canvas (2005.8)

Museum purchase with funds provided by the Berchel H. and Alice Dale Harper Estate

Sir Thomas Lawrence (English, 1769-1830), *Portrait of Sir Samuel Shepherd*, (1760-1840), 1796, oil on canvas (2005.28)

Phil and Terri Schrager and Patron Circle for Contemporary Art

Dirk Skreber (German, born 1961), *Untitled (Iraqis)*, 2003, oil and isolation tape on canvas (2005.11)

David and Anne Rismiller

Keith Jacobshagen (American, born 1941), *Rain in August, Platte Valley*, 2005, oil on canvas (2005.31)

Sculpture

Gift of Hugh W. Williams

Kent Ullberg (American, born Sweden 1945), *Victory Eagle*, 2005, bronze alloy on granite base (2005.12)

Prints and Photographs

Gift in memory of George and Carmella Czarnecki, by Dr. James G. Czarnecki

Vito Acconci (American, born 1940), *Crash*, 1984, photo-intaglio, aquatint, relief, and shaped embossing, diptych, 16/30 (2005.30.a-b)

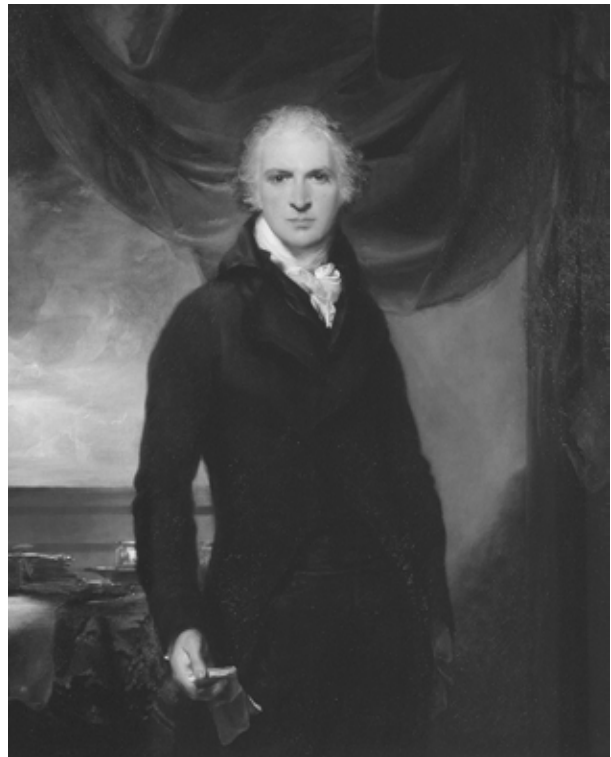
Gift in honor of

Joslyn's 75th Anniversary, by the Getscher-Wilkinson Collection

Charles-Albert Waltner (French, 1846-1925), *Quand tu seras fleur devenue* (*When You Become a Flower*), ca. 1905, drypoint (2005.22.1-21)

Marsha V. Gallagher, as a small token for her many years of service as Chief Curator, by the Getscher-Wilkinson Collection

Nicolas-Eustache Maurin (French, 1799-1850), *Conquest of Mexico: Hernando Cortes destroying his fleet at Vera Cruz*, 1519, ca. 1840, lithograph (2005.21)



Sir Thomas Lawrence (English, 1769-1830), *Portrait of Sir Samuel Shepherd*, (1760-1840), 1796, oil on canvas, Museum purchase with funds provided by the Berchel H. and Alice Dale Harper Estate (2005.28)

Robert H. Getscher and Harry V. Wilkinson, by Thomas and Marsha French

Thomas Barker (Barker of Bath) (British, 1769-1847), Figure of an elderly woman from *Impressions of Rustic Figures after Nature*, 1801, pen lithograph with spepia wash and white additions (2005.26)

John H. Wilson's arrival as Curator, by the Getscher-Wilkinson Collection

Marcantonio Raimondi (Italian, ca. 1480-before 1534) after Lucas van Leyden (ca. 1494-1533), *The Pilgrims*, engraving (2005.16)

Jan de Bisschop, called Johannes Episcopus (Dutch, ca. 1628-1671), *Aphrodite* (*Venus de' Medici*), Plate 50 from *Signorum Veterum Icones*, 1668-1669, etching (2005.17)

David Lucas (English, 1802-1881) after John Constable (1776-1837), *Stone Henge*, plate 37 from H.G. Bohn's *English Landscape Scenery: A Series of Forty Mezzotint Engravings on Steel*, by David Lucas. From *Pictures Painted by John Constable*, R.A., 1855, mezzotint (2005.18)

Joseph Pennell (American, 1857-1926), *Grosse Horloge, Rouen*, 1907, etching (2005.19)

Frank Brangwyn (Welsh, 1867-1956), Title unknown (*Bank of Trees*), etching (2005.20)

Anonymous gift in honor of Marlene and Joe Ricketts

Jules-Abel Faivre (French 1867-1945), *On les aura!*, 1916, lithograph on paper (2005.25)

Gift of Mr. and Mrs. Michael Schneeweiss

Thomas Moran (American, born England 1837-1926), *The Grand Canyon of Arizona from Hermit Rim Road*, 1913, chromolithograph (2005.23)

Anonymous Gift

Joan Miró (Spanish, 1893-1983), #127 from *Le Marteau sans maître (the Hammer without a Master)*, 1976, color aquatint and etching, xxxi/L (2005.29)

Museum Purchase with funds from Patron Circle for Contemporary Art and Art Purchase Fund

Stan Douglas (Canadian, born 1960), *"La Inalámbrica" Building/Metropolitan Building, Habana Vieja*, 2004, C-print mounted on quarter inch honeycomb aluminum, 2/7 (2005.10)

Museum Purchase

Claes Oldenburg (American, born 1929), *The Soap at Baton Rouge and Multiples in Retrospect 1964-1990*, mixed media (2005.15.1, .2.a-b, .3)

Decorative Arts

Bequest in memory of

Elmer A. Gerfen and Fred Schallert, by Dody P. Gerfen

Tiffany Studios (American, 20th Century), *Lily Lamp*, gilt bronze with favrile glass shades (2005.7)

Asian Art

Gift in honor of

Norma and Jim Fuller, by Dr. John K. Fong

China, Han Dynasty (206 BCE -220 CE), *Inkstone in the shape of the character for "Wind" (feng)*, earthenware with incised decoration (2005.2)

Marsha Gallagher, by Dr. John K. Fong

China, Warring States Period (475-221 BCE), *Basin in the form of a bronze*, glazed pottery (2005.5)

the Joslyn docents, by Dr. John K. Fong

China, Tang Dynasty (618-907), *Covered Box*, Tongguan ware with brown spots (2005.4.a-b)

Gift of

Dr. John K. Fong

China, Qing Dynasty (1644-1911), *Archer's Ring*, jade (2005.3)

Mr. Anunt Hengtrakul

China, Tang Dynasty (618-907), *Zhenmushou (earth or spirit quellers: Tianlu (human head) and Bixie (leonine head))*, glazed earthenware (2005.1.1-2)

Chinese, Shang Period (1600-1100 BCE), *Pottery vessel in the shape of the bronze form Jue*, late Shang period, incised ceramic (2005.14)

Partial Gift of Mr. Anunt Hengtrakul and Museum Purchase with funds from the Peter Kiewit Foundation

Chinese, Qing, 1644-1911, Kangxi Reign (1662-1722), *Eight-Panel Screen*, early 18th century, carved red lacquer, gold inlaid brown lacquer, wood (2005.13.a-h)

Ancient Art

Gift of

Mr. Richard A. Jourdan

20 coins from Magna Graecia (Ancient Greece, her colonies and neighbors):

Italia, Calabria, Taras (Tarentum, Taranto), AR Nomos (Taras on dolphin; reverse: Hippocamp), 500-480 BCE (2005.27.1)

Italia, Calabria, Taras (Tarentum), AR Nomos (Taras on dolphin; reverse: Hippocamp), 500-480 BCE (2005.27.2)

Italia, Lucania, Sybaris, AR Nomos (VM in ligature above bull; reverse: Incuse obv.), ca. 550-510 BCE (2005.27.3)

Italia, Lucania, Velia, AR Drachm (Forepart of lion; reverse: Incuse square), 530-510 BCE (2005.27.4)

Italia, Bruttium, Kaulonia, AR Nomos (Apollo walking right; reverse: Incuse of Obv), 530-480 BCE (2005.27.5)

Italia, Bruttium, Kroton, AR Nomos (Delphic tripod; reverse: Tripod incuse), 530-500 BCE (2005.27.6)

Sikelia, Akragas, AR Didrachm (Eagle standing; reverse: Crab), 500-495 BCE, (2005.27.7)

Sikelia, Akragas, AR Tetradrachm (Eagle standing; reverse: Crab), 464-450 BCE, (2005.27.8)

Sikelia, Selinous, AR Didrachm (Selinon leaf; reverse: Incuse square), 540-515 BCE (2005.27.9)

Italia, Lucania, Herakleion, AR Nomos (Athena with Skylla helmet; reverse: Herakles with Nemean lion), ca. 390-340 BCE (2005.27.10)

Italia, Lucania, Metapontion, AR Nomos (Demeter; reverse: Ear of barley), 340-330 BCE (2005.27.11)



Chinese, Qing, 1644-1911, Kangxi Reign (1662-1722), *Eight-Panel Screen* (detail), early 18th century, carved red lacquer, gold inlaid brown lacquer, wood, Partial gift of Mr. Anunt Hengtrakul and Museum Purchase with funds from the Peter Kiewit Foundation (2005.13.a-h)

Italia, Bruttium, Rhegion, AR Tetradrachm (Charioteer in biga of mules; reverse: Hare bounding, REGINON), ca. 478–476 BCE (2005.27.12)

Sikelia, Katane, AR Tetradrachm (Amenanos as kneeling man-headed bull; reverse: Nike), ca. 464–450 BCE (2005.27.13)

Sikelia, Himera, AR Tetradrachm (Himera driving quadriga; reverse: Himera standing at altar), ca. 410 BCE (2005.27.14)

Sikelia, Syrakousai (Syracusa, Syracuse), AR Dekadrachm (Fast quadriga; reverse: Arethusa), 405–367 BCE (2005.27.15)

Italia, Etruria, Populonia, AR 20 Asses (Gorgoneion; reverse: unidentifiable), ca. 3rd c. BCE (2005.27.16)

Sikelia, The Sikeliotai, struck in Morgantina, AR 8 Litrai (Persephone; reverse: Nike in fast quadriga), ca. 214–213 BCE (2005.27.17)

Sikelia, Carthaginian Empire, Siculo-Punic, AR Tetradrachm (Arethusa; reverse: Thymiaterion, Horse), 350–320/15 BCE (2005.27.18)

Sikelia, Carthaginian Empire, Siculo-Punic, AR Tetradrachm (Arethusa; reverse: Horse head), 330/15–300 BCE (2005.27.19)

Sikelia, Carthaginian Empire, Siculo-Punic, AR Tetradrachm (Herakles; reverse: Horse head), 300–289 BCE (2005.27.20)

Gifts to the Resource Collection

Gift in memory of Mary MacIntosh Bath, by Hubert M. Bath

Robert Fletcher Gilder (American, 1856–1940), *Winter Near Wake Robin*, ca. 1929, oil on canvas board

Gift of Joe Ricketts

John Coleman (American, born 1949), *Addih-Hiddisch*, from *Explorer Artists, "Bodmer-Catlin Series,"* 2005, bronze

John Coleman (American, born 1949), *Keokuk*, from *Explorer Artists, "Bodmer-Catlin Series,"* 2005, bronze

John Coleman (American, born 1949), *Mato-Tope*, from *Explorer Artists, "Bodmer-Catlin Series,"* 2005, bronze

John Coleman (American, born 1949), *Pehriska-Ruhpa*, from *Explorer Artists, "Bodmer-Catlin Series,"* 2005, bronze

Loans

Loans from Joslyn Art Museum

The Albuquerque Museum (Albuquerque, NM)
 exhibition: *Prelude to Spanish Modernism: Fortuny to Picasso*
 (August 21, 2005 - February 26, 2006)
 venues: The Albuquerque Museum
 The Meadows Museum (Dallas, TX)
 work lent: José Villegas y Cordero, *Moroccans Examining Arms*, 1871, oil on wood panel, Gift of Francis T.B. Martin (1995.17)

Brandywine River Museum (Chadds Ford, PA)
 exhibition: *Animals in the Gallery*
 (March 12 - May 22, 2005)
 work lent: Eastman Johnson, *Child with a Rabbit*, 1879, oil on wood panel, Museum purchase (1946.32)



Eastman Johnson, *Child with a Rabbit*, 1879, oil on wood panel, Museum purchase (1946.32), loaned to the Brandywine River Museum, Chadds Ford, PA, for the exhibition *Animals in the Gallery*

Cedar Rapids Museum of Art (Cedar Rapids, IA)

exhibition: *Grant Wood at 5 Turner Alley*
 (September 9, 2005 - January 15, 2006)
 work lent: Grant Wood, *Stone City, Iowa*, 1930, oil on wood panel, Gift of the Art Institute of Omaha (1930.35)

Columbus Museum of Art (Columbus, OH)

exhibition: *Renoir's Women*
 (September 23, 2005 - January 8, 2006)
 work lent: Pierre-Auguste Renoir, *Young Girls at the Piano*, 1889, oil on canvas, Museum purchase (1944.20)

Desert Caballeros Western Museum (Wickenburg, AZ)

exhibition: *John Coleman*
 (October 15 - December 31, 2005)
 works lent: 10 Karl Bodmer prints from *Travels in the Interior of North America*, 1832–34, engraving with aquatint, hand-colored, Gift of the Enron Art Foundation

Galerie Lelong (New York, NY)

exhibition: *Petah Coyne*
 (January 22 - March 15, 2005)
 work lent: Petah Coyne, *Untitled #1165 (Paris Blue)*, 2002–03, mixed media, Museum purchase with funds provided by Richard and Mary Holland (2003.6)

Great Plains Art Museum (University of Nebraska-Lincoln, Lincoln, NE)

exhibition: *Tom Palmerton: A Retrospective*
(April 29 - June 26, 2005)

works by Tom Palmerton lent:

Marker on the River, watercolor, Gift of Mr. and Mrs. W.A. Quambusch (1984.44); *January*, egg tempera on panel, 1967, Gift of Mike Novak (1967.42); *Untitled*, watercolor, Gift of Mr. and Mrs. W.A. Quambusch (1984.45)

Museum of Nebraska Art (Kearney, NE)

exhibition: *Dwight Kirsch: My Life in Art*
(May 21 - September 4, 2005)

work lent: Dwight Kirsch, *Manhattan Night*, 1958, sumi ink and collage, Museum purchase (1961.77)

Naples Museum of Art (Naples, FL)

exhibition: *The Wyeths*

(January 21, 2005 - May 14, 2006)

works lent: Andrew Wyeth, *Half Bushel*, 1959, watercolor, Museum purchase (1960.271); James Wyeth, *Portrait of 75*, 86, 91, 93, 84, 1980, oil on canvas, Gift of Michael and Gail Yanney (1991.18)



James Wyeth, *Portrait of 75, 86, 91, 93, 84*, 1980, oil on canvas, Gift of Michael and Gail Yanney (1991.18), loaned to the Naples Museum of Art, Naples, FL, for the exhibition *The Wyeths*

Nasher Museum of Art at Duke University (Durham, NC)

exhibition: *The Forest: Politics, Poetics, and Practice*
(October 2, 2005 - January 13, 2006)

work lent: Petah Coyne, *Untitled #1165 (Paris Blue)*, 2002-03, mixed media, Museum purchase with funds provided by Richard and Mary Holland (2003.6)

Oklahoma City Museum of Art (Oklahoma City, OK)

exhibition: *Artist as Narrator: 19th Century Narrative Art in England and France* (August 17 - December 5, 2005)

work lent: Georges Rochegrosse, *Salome Dancing before King Herod*, 1887, oil on canvas, Gift of Francis T.B. Martin (1953.239)

Sioux City Art Center (Sioux City, IA)

exhibition: *Beyond the Horizon: Paintings by Keith Jacobshagen*, 1990-2005 (March 12 - June 12, 2005)

work lent: Keith Jacobshagen, *All Souls*, 1994-95, oil on canvas, Purchased with funds provided by David and Anne Rismiller (1998.26)

Springfield Art Museum (Springfield, MO)

exhibition: *May Stevens: Water Words, Paintings and Works on Paper*, 1990-2005 (June 11, 2005 - April 2, 2006)

venues: The Minneapolis Institute of Arts (Minneapolis, MN)
The National Museum of Women in the Arts
(Washington, D.C.)

The Springfield Art Museum

work lent: May Stevens, *Connemara (Rock Pool)*, 1999-2001, acrylic on unstretched canvas, Given in memory of Linda Albin by her husband, Art, and her children and friends (2003.3)

Strategic Air & Space Museum (Ashland, NE)

exhibition: *1945* (June 18 - September 18, 2005)

works by Kenneth Willmarth, Sr. and Kenneth Willmarth, Jr. lent:

Four illustrations from a 1946-47 Union Pacific Railroad advertising campaign titled *Your America*, Gift of the Union Pacific Railroad (1947.439.2, .6, .7 and .9)

works by Norman Rockwell lent:

The Four Freedoms, posters produced by the U.S.

Government in 1943; all are offset color lithographs: *Save*

Freedom of Worship (1953.11.4.A); *Freedom from Want*

(1953.11.5.A); *Save Freedom of Speech* (1953.11.6.A); *Freedom*

from Fear (1953.11.7.A); all are the gift of Phil W. McMahon

other works lent (all are the gift of Phil W. McMahon):

Mikhail Kupriyanov, Porfiri Krylov, Nicholai Sokolov, *We*

Will Mercilessly Defeat and Annihilate the Enemy, 1941, World

War II poster, U.S.S.R. (1953.33.11); V. Koretskii, *Through*

Selfless Labor, We Will Supply the Red Army and Navy with

Everything Necessary for Victory!, 1941, World War II poster,

U.S.S.R. (1953.33.2); Dimitri Stakheivich Moor, *The Demon*

Facist is Screaming, "The Russian is Creeping Toward Your

Door!" He Himself is Rushing Toward the Dardenelles to Put Down

His Jackboot, 1941, World War II poster, U.S.S.R. (1953.35.4)

Loans to Joslyn Art Museum

Lenders to the permanent collection (originating in 2005)

Anonymous; Gary and Mary Day; Eve Fisher; Dr. John K. Fong; W.C. Foxley; Signe Stuart; Richard Weisman

Lenders to special exhibitions organized by, or in collaboration with, Joslyn Art Museum

Stan Douglas: *Inconsolable Memories*

Stan Douglas; David Zwirner, New York

Dirk Skreber: *Na(h)tanz 2.0*

Blum & Poe Gallery, Los Angeles; Frank Cohen Collection,

London; Gallery Luis Campaña, Cologne, Germany; Danielle

and David Ganek; John A. Smith and Vicky Hughes;

Olbricht Collection, Essen, Germany; Dirk Skreber

Picasso: *Master Printmaker*

Marina Picasso Collection

EDUCATION PROGRAMS

Tours

795 total tours; 22,922 total participants
(426 student tours, 16,857 participants; 369 adult tours, 6,065 participants)

Lectures, Gallery Talks, and Special Programs for Adults

39 programs; 3,992 total participants

Stan Douglas Discusses His Work (March 19)

Stan Douglas, artist featured in the exhibition *Stan Douglas: Inconsolable Memories*, in conversation with J. Brooks Joyner, Director, Joslyn Art Museum (Members' opening lecture for the exhibition)

Giants, Dwarfs, Saints or Humans: Who First Set Sail for Cyprus? (March 23)

Dr. Stuart Swiny, State University of New York (public lecture presented in partnership with the Archaeological Institute of America/Omaha-Lincoln Society)

Dr. John Fong positions one of two Zhenmouhou (earth spirits or spirit quellers) in the newly reinstalled Asian art gallery.



A New View of Joslyn's Asian Art Collection (April 13)

Dr. John K. Fong, Adjunct Curator of Asian Art, Joslyn Art Museum (Members' lecture for the new Asian art installation)

Ancient Vases/New Ideas: Revisiting Joslyn's Ancient Pottery (April 17)

Ann R. Steiner, Associate Dean of the Faculty and Shirley Watkins Steinman Professor of Classics at Franklin & Marshall College (public lecture presented in partnership with the Archaeological Institute of America/Omaha-Lincoln Society)

Mir Iskusstva: Russia's Age of Elegance (June 4)

Yevgenia Petrova, Deputy Director, State Russian Museum of St. Petersburg, and the Omaha Chamber Music Society (Members' opening program for the exhibition)



Yevgenia Petrova (left), with interpreter Elena Romonov, provides formal remarks at the Russia's Age of Elegance Members' Opening, June 4

Four Years in Russia (June 5)

Lisa Vershbow, artist and jewelry designer featured in the exhibition *Four Years in Russia* (public brunch and lecture for the exhibition)

Artist Frederick Brown (left) encourages a student during a Joslyn-organized weekend workshop in June, held in celebration of Brown's exhibition *Portraits of Music I Love*



Portraits of Music I Love (June 25)

Frederick J. Brown, artist featured in the exhibition *Frederick J. Brown: Portraits of Music I Love* (public gallery talk for the exhibition)

Citizens of St. Petersburg: The World of Art Group and Russia's European Tradition (July 10)

Dr. Janet Kennedy, Professor and Chair, Department of History of Art, Indiana University (public lecture for the exhibition *Mir Iskusstva: Russia's Age of Elegance*)

Picasso: Master Printmaker (September 30)

Emmanuel Benador, Director, Prints Department, Jan Krugier Gallery, New York, and curator of the exhibition (Director's Preview gallery talk for the exhibition)

Members Mingles (gallery talks exclusively for members):

J. Brooks Joyner, Director, Joslyn Art Museum, for *Renaissance to Rococo* (January 12)

Dr. John Wilson, Director of Curatorial Affairs/Curator of European Art, for *Russia's Age of Elegance* (July 27)

Dr. John Wilson, Director of Curatorial Affairs/Curator of European Art, for *Picasso: Master Printmaker* (November 15)

Tuesday Master Pieces: A Cultural Series, programs presented in conjunction with the exhibition *Renaissance to Rococo*:

Old Masters at the Wadsworth Atheneum: Pictures That Have Stood the Test of Time (February 1)

Dr. Edgar Peters Bowron, Audrey Jones Beck Curator of European Art, Museum of Fine Arts Houston

Caravaggio and the Ecstasy of St. Francis of Assisi (February 8)

Dr. James G. Czarnecki, Professor of Art History, University of Nebraska at Omaha

St. Cecilia Cathedral: Art and Architecture of Devotion (February 15)

Brother William Woeger, FSC, Executive Director, Cathedral Arts Project, and J. Brooks Joyner, Director, Joslyn Art Museum

A Modern Spin on the Old Masters: An Evening of Dance (February 22)

Under the direction of Josie Metal-Corbin, M.Ed., Director, University of Nebraska at Omaha's The Moving Company, and the National Dance Association's 2004 Dance Educator of the Year in Higher Education

Sunday Afternoons with the Director, gallery walks led by Joslyn Director J. Brooks Joyner, followed by coffee and desserts:

Turmoil and Triumph: Conflict in Art (January 16)

Walk-In-The-Round: Our Sculpture Icons (February 27)

A Flair for the Dramatic: Painting as Theater and Spectacle (March 13)

Art in Bloom: Secret Gardens & Landscape Splendor (April 24)

Our Glorious Building: An Architectural Tour of Joslyn (May 22)

Appetite for Art: Director's Choice, gallery talks featuring one work from the collection each session, led by Joslyn Director J. Brooks Joyner, followed by lunch:

Fruits of Labor featuring Jules Breton's *The Weeders* (January 18)

Illuminated Impression featuring William Merritt Chase's *Sunlight and Shadow* (February 22)

An American Original featuring N.C. Wyeth's *Untitled* (model for ad for Fisk Cord Tires) (March 29)

Action, Abstraction, Absolute Satisfaction featuring Helen Frankenthaler's *Monoscape* (April 26)

Too-Too Good! featuring Edgar Degas' *Little Dancer Aged Fourteen* (May 17)

A Heady Harvest featuring *October* under the direction of Willem de Pannemaker (September 27)

Food for the Soul featuring *Saint Jerome* from the workshop of Jusepe de Ribera (November 1)

Mourning Glory featuring Eugene Delacroix's *The Entombment* (after Rubens) (November 29)

Visualizing Literature: Book Club for Art Lovers, discussions linking literature and the visual arts, presented in partnership with the Nebraska Medical Center's Health & Wellness Club:

My Antonia by Willa Cather (March 8)

The Great Gatsby by F. Scott Fitzgerald (May 10)

Headlong by Michael Frayn (September 13)

Girl with a Pearl Earring by Tracy Chevalier (November 8)

CU at Joslyn, lectures presented in collaboration with Creighton University:

Listening to Nebraska Architecture (September 17)

Thomas A. Kuhlman, Associate Professor of English, Creighton University

Pleasure to the People! How Oakview Mall is Like the Roman Baths (October 22)

Gregory S. Bucher, Associate Professor of Classical and Near Eastern Studies, Creighton University

America's Visual Frontier: New Interpretations of the Western Landscape (November 19)

Heather Fryer, Assistant Professor of History, Creighton University

Art:21 – Art in the Twenty-First Century, a series of PBS video screenings and discussion presented in partnership with the Bemis Center for Contemporary Arts:

Power (October 1)

Memory (November 5)

Structure (December 3)

Art Classes

8,878 total participants

Art Classes and Camps

409 sessions

4,605 participants

Art-Making with

School Tour

144 sessions

3,179 participants

Girl Scout and

Boy Scout Programs

13 sessions

251 participants

Kiewit Summer Fun

27 sessions

464 participants

Pacific Pals

9 sessions

129 participants

Riley Gallery Receptions

3 events

250 participants



Trinity Learning Center Art-Making Tour for Kids and Parents, April 8



Museum teacher Steven Elliott (left) visits the galleries with former Joslyn Art School students, ages 7-12, participating in workshops to create art for an exchange with Moscow's State Pushkin Museum of Fine Arts, August 11

Outreach Programs

93,178 total participants

Outreach Trunks

233 requests
85,799 participants

Resource Packets and Videos

279 requests
3,872 participants

Discovering Art

31 sessions
1,532 participants

After-School Art Program

61 sessions
762 participants

Outreach Talks

12 talks
893 participants

Art Express*

7 talks
134 participants

Portrait Drawing*

12 sessions
186 participants

* A partnership with UNMC,
UMA, and The Nebraska
Medical Center

Community Events

7,407 total participants

Family Fun Day – Renaissance to Rococo (January 23);
2,212 participants

Corporate Partners Day (January 30); 504 participants

Sponsor Day – Renaissance to Rococo (February 6 and 12);
2 events; 104 participants

Story Time (February 12, March 12, and April 9); 3 events;
95 participants

Storytelling in the
galleries during the
Audubon Family Fun
Day, November 6



Frederick J. Brown Family Day (June 20); 125 participants

Sponsor Day – Mir Iskusstva: Russia's Age of Elegance
(June 26); 105 participants

Military Appreciation Day (August 13 and November 12);
2 events; 200 participants

Sponsor Day – Jazz on the Green (August 14); 143 participants

Family Fun Day – Mir Iskusstva: Russia's Age of Elegance
(August 21); 1,438 participants

Passport Partners Evening at Joslyn (August 31); 350 participants

Passport Partners Family Day (October 30); 107 participants

*Family Fun Day – Out of the Wild: John James Audubon's Four-
Legged Mammals of North America* (November 6); 942 participants

Holiday Lights Family Festival (December 18); 813 participants

Third Thursday Art Encounters Club (a partnership with The
Nebraska Medical Center's Health & Wellness Club);
12 events; 269 participants



Madame Irina Antonova, Director of the State Pushkin Museum of Fine Arts, speaks to AP history students from OPS, March 25

Programs for Teachers and Students

4,962 total participants

Museum Careers Workshop

(February 2)
90 participants

College Night

(February 18)
570 participants
(October 14)
550 participants

Student Art Exhibition

(March 11-20)
136 student artists;
450 participants
(awards ceremony)

Presentation by Irina Antonova,

Director of the State Pushkin
Museum of Fine Arts
(March 25)
200 participants

Prairie Visions

Leadership Academy
(June 8-11)
50 participants

Nebraska Art Teachers

Association Fall Conference
(October 7); 135 participants
(October 8); 145 participants

Conference Keynote Address by

Artist and Writer Faith Ringgold
(October 8)
380 participants

Celebrate Creativity

(a partnership with the
Omaha Symphony)
5 events
(October 18, 19, 20, 25, 27)
1,465 participants

EdFest and Teacher In-Services

33 sessions
791 participants

Hands-On Resources

26,947 total participants

Scott EdTech Gallery

18,700 participants
(estimated)

Art Packs

522 requests
1,997 participants

Audio Guide

214 participants

Kids Can Do Art

6,000 participants
(estimated)

MUSIC PROGRAMS

First Friday JAM

11th season began in the fall of 2005

1,785 in attendance

Andreasen Circle (January 7)

World Port (February 4)

The Turfmen (March 4)

The Nelson Brothers (April 1)

Bob Malone (May 6)

Chris Saub Trio (October 7)

Unshut (November 4)

The Jazzwholes (December 2)

Jazz on the Green

21st year

50,200 in attendance

Charlie Wood (July 7)

The Dave Stryker Group featuring Victor Lewis (July 14)

Igor Butman Quartet (July 21)

Neal Davis (July 28)

Prairie Cats (August 4)

Bobby Watson (August 11)

Omaha Jazz Orchestra (August 18)

The Mezcal Brothers (August 25)

Holiday Under Glass

12th year

826 in attendance

Creighton University Chamber Choir (November 30)

Bellevue East High School's varsity show choir Take II
(December 1)

Concert Cancelled ~ scheduled group unable to perform
(December 2)

Piano students of the Omaha Conservatory of Music
(December 7)

South High School (December 8)

St. Wenceslaus Catholic Handbell and Vocal Choirs
(December 9)

Papillion-La Vista High School (December 14)

Bellevue West High School's The West Connection and
Loratura (December 15)

Central High School Bel Canto Singers and Concert Choir
(December 16)

Special Concerts

Marcello Guzzo (May 20)

406 in attendance



CREDITS ABOVE: (TOP ROW, LEFT TO RIGHT) Bobby Watson performs at Jazz on the Green, August 11; Marcello Guzzo, May 20; (BOTTOM ROW) The crowd gathers for Jazz on the Green as viewed from the roof of the Museum, August 4

JOSLYN ART MUSEUM ASSOCIATIONS

The Joslyn Art Museum Associations (JAMA) of Omaha and Southwest Iowa serve as support groups for the Museum, volunteering time, enthusiasm, and fundraising abilities in a variety of capacities including planning annual fundraisers for the Museum and sponsoring a wide range of education programs and special events.

2005-06 JAMA Officers

Omaha

President Lori Williams	President Elect & Recording Secretary Karen Sundell
Vice President Education Rita Price	Corresponding Secretary Sally Lusk
Vice President Fundraising Melissa Marvin	Treasurer Mary Kerr
Vice President Social Cindy Irvine	Advisor Pat Wagner
Southwest Iowa	
President Cathy Born	Treasurer Jacque Diez
Secretary Cheryl Downing	Advisor Martha Winum

JAMA, Omaha

Special Projects

Family Fun Days (January 23, August 21, November 6)
College Nights (February 18, October 14)
Student Art Exhibition (March 11-20)
New Members' Event (April 7)
Picasso: Master Printmaker Director's Preview Dinner
(September 30)
EdFest / K-12 Teachers' Receptions (November 3 & 8)
Holiday Staff Reception (December 7)
JAMBassadors
Art Classes Scholarships
Education Department Support
Sign Language Interpreters



Joslyn Director J. Brooks Joyner (left) with Natalie Hahn and special guest Emmanuel Benador (right), Director of the Prints Department, Jan Krugier Gallery, New York, at the *Picasso: Master Printmaker* Director's Preview Dinner, September 30

Fundraisers

Please Your Palate Cooking School featuring
Chef Scott Uehlein of Canyon Ranch Health Resorts and
SpaClubs (April 21)



Chef Scott Uehlein
with Cooking School
co-chairmen Mary
Daugherty (left) and
Melissa Marvin (right),
April 21

Mir Iskusstva: Russia's Age of Elegance Gala Preview (June 3)
Picasso: Artist Without Boundaries Lecture and Luncheon
featuring Gertje R. Utley, Ph.D., an independent scholar in
art history, and celebrating the exhibition *Picasso: Master
Printmaker* (November 7)
Treeview for Artistree: A Festival of Trees (November 17)
Artistree: A Festival of Trees (November 18-December 11)



Gertje Utley, Ph.D.
(center) with Lecture
Luncheon event
chairmen (left to right)
Kim Brown, Molly
Skold, and Julie Fritz
and JAMA President
Lori Williams,
November 7

Art Trips

Art Trip to Washington, D.C., featuring the special exhibition
Toulouse-Lautrec and Montmartre at the National Gallery of
Art (optional second day in Baltimore, MD) (May 10-11)
Art Trip to Los Angeles, CA, featuring the special exhibition
Tutankhamun and the Golden Age of the Pharaohs at the Los
Angeles County Museum of Art (November 2-3)

JAMA, Southwest Iowa

Special Projects

Joslyn Scholars (Art Classes Scholarships)
School Services Brochure

Fundraisers

Seeds of Art featuring Elvin McDonald, "Dean of American
Garden Editors," and deputy editor for gardens and outdoor
living at *Better Homes and Gardens* magazine (May 17)
The Art of Fashion Luncheon and Style Show (November 19)



Art of Fashion chairmen
(left to right)
Diane McKee and
Michelle Olderoog with
JAMA Southwest Iowa
President Cathy Born,
November 19

BODMER SOCIETY AND CONTEMPORARY ART SOCIETY EVENTS

Bodmer Society

The Bodmer Society is named after Karl Bodmer, the remarkable artist who accompanied Prince Maximilian's 1832-34 expedition to North America. The Bodmer Society was created to foster interest in Western and Native American art. Membership dues support the unique collections and programs of the Margre H. Durham Center for Western Studies at Joslyn Art Museum.

September 7

Special presentation by Dr. Gary E. Moulton, Thomas C. Sorensen Professor of American History Emeritus, University of Nebraska-Lincoln, and Senior Advisor on Joslyn's Maximilian Journals Project. Dr. Moulton discussed the parallels between the expeditions of Prince Maximilian and Karl Bodmer and Lewis and Clark and provided an update on the progress of the Maximilian Journals Project. The reception was hosted by Mary and Joe Daugherty.

September 26

Annual *rendezvous!* dinner, hosted by Mary and Richard Holland. Bill Steiner, Audubon expert and collector, was the special guest speaker for the evening. Mr. Steiner has one of the most significant private collections of Audubon prints in the United States. His discussion focused on Joslyn's exhibition *Out of the Wild: John James Audubon's Four-Legged Mammals of North America*.



Audubon print expert, collector, and author Bill Steiner speaks at the Bodmer Society's annual rendezvous! event, September 26

November 10-13

Trip to Santa Fe, New Mexico, to view Western and Native American art at major art museums, galleries, and private homes. Members visited the renowned institutions on Museum Hill including the Museum of Spanish Colonial Art, the Museum of Indian Arts & Culture, the Museum of International Folk Art, and the Wheelwright Museum of the American Indian. Members also had private receptions and gallery tours at Gerald Peters Gallery and the Nedra Matteucci Gallery. Bodmer Society members Eve and Fred Simon hosted a reception and tour of their collection at their Santa Fe home.

November 30

Private dinner party at Arader Gallery in New York City hosted by W. Graham Arader, III. Members had the opportunity to meet fellow members of the National Chapter of the Bodmer Society and view a few of the most important works from Joslyn's Bodmer collection.

Contemporary Art Society

The Contemporary Art Society is a dynamic group whose mission is to encourage, support, and stimulate the collection and study of contemporary art at Joslyn. Members share a passion for the exciting art of our time with others who share a similar interest and help foster a new audience among those who are becoming acquainted with these important works.

March 18

Third Annual Dinner with internationally renowned artists Stan Douglas and Dirk Skreber. Members enjoyed a private dinner and informal conversations with the artists followed by a preview of Douglas' and Skreber's solo exhibitions.

Joslyn director J. Brooks Joyner (left) and Richard Weisman, April 14



April 14

Private reception and "Art of Collecting" talk by world-renowned art collector Richard Weisman who shared his experiences with pop art, his friendship with Andy Warhol, and how to get started as an art collector. Members also viewed Joslyn's newly reinstalled contemporary and modern art galleries.

June 25

Reception and talk with artist Frederick J. Brown. Brown discussed his contemporary portraits of jazz musicians displayed in the exhibition *Portraits of Music I Love*.

July 6

Ree and Jun Kaneko hosted a private reception and behind-the-scenes sneak peek of Jun's new art facility, KANEKO. Members had an opportunity to learn more about this amazing facility scheduled to open in 2007.

September 23-26

Trip to Vancouver, BC, Canada, to view works of contemporary art. The tour included a visit to the Vancouver Art Gallery, the Morris and Helen Belkin Art Gallery, the Museum of Anthropology at the University of British Columbia, numerous galleries, and the exclusive opportunity to visit the home of a private collector. A highlight of the trip was a preview of the *Vancouver Sculpture Biennale: Open Spaces 2005/2006* which emphasizes Vancouver's public spaces with an 18-month installation of major public art sculptures.

October 19

Members co-hosted a reception with Kutak Rock, LLP honoring Bob Rogers and his late wife Roberta for their commitment to contemporary art and for their assistance in establishing the Kutak Rock art collection. Members and guests viewed the distinguished collection before the works were removed for the renovation of The Omaha Building.

PATRON EVENTS

Patron Members Brunch

Patron members are a vital link in the long tradition of philanthropy and personal involvement that has been at the heart of Joslyn.

September 11

Members were invited to a special Patron Members-only brunch to meet Dr. John Wilson, Joslyn's Director of Curatorial Affairs and Curator of European Art. Following the brunch, Director J. Brooks Joyner discussed the exhibition *Russia's Age of Elegance* highlighting the significance and history of a few select pieces.



Jim and Norma Fuller with Dr. John Wilson (right) at the Patron Members Brunch, September 11

Young Art Patrons

The Young Art Patrons offers engaging social and educational events for a rising generation of arts admirers between the ages of 25 and 40. These events emphasize the richness of the Museum's special exhibitions and collections, provide exposure to a variety of music programs, and feature privileged access to the Museum's staff and board.

May 4

The Young Art Patrons (YAP) held a kick-off celebration, *Art on Tap*, announcing Joslyn's newest Patron group. This event provided an opportunity for young professionals to visit the Museum free of charge and meet others who share a similar interest in the arts.



Art on Tap, the Young Art Patrons kick-off celebration, May 4

June 23

Members had a special evening with contemporary artist Frederick J. Brown to learn more about his portraits of jazz musicians in the exhibition *Portraits of Music I Love*. The evening included refreshments, live jazz music, and a gallery talk by Brown.

July 14

YAP members had a special evening at the *Jazz on the Green* concert featuring guitarist Dave Stryker. A designated area on the green was reserved for members to enjoy the live music and visit with other young professionals.

August 12

YAP members had an exclusive tour of three art facilities in downtown Omaha: KANEKO, Bemis Center for Contemporary Arts, and Fluxion Gallery. The *Art Crawl in August* provided an opportunity for members to view contemporary art in the community. Members enjoyed private receptions at each location.



The Young Art Patrons' Art Crawl in August stops at the Bemis Center for Contemporary Arts, where Jeremy Stern (right), Assistant Director/ Curator, chats with members, August 12

September 12

YAP members partnered with the Omaha Symphony for their Pink Martini Cocktail Party. Members enjoyed recorded jazz music by the band Pink Martini and visited with members from other young professional organizations.

October 14

Members received free admission, reserved seating, and complimentary refreshments during a special evening at *First Friday JAM* with the Chris Saub Trio.

November 20

YAP members and their families took part in an afternoon of entertainment and education at the *YAP Family Day*. Members enjoyed art making activities, a scavenger hunt, and a guided tour of the exhibition *Out of the Wild: John James Audubon's Four-Legged Mammals of North America*.

VOLUNTEERS

Education

JAMbassadors

Kristina Backlund
Jenny Beede
John Bellus
Cannon Biggs
Alicia Bones
Alex Borovski
Michaela Bradley
Caitlin Brayfield
Kelsey Brown
Michaela Brown
Lisa Burn
Drew Carryer
Kevin Cheairs
Lauren A. Domenge
Emily Dixon
Liatte Dotan
Maura Egan
Gail Fanders
Danielle Fezouati
Ben Fisher
Melissa Forster
Robbie Gordy
Anna Greer
Neil Griess
Amy Gronewald
Holly Haines
Emily Harrison
Ashleigh Hartman
Katie Hedgpeth
Candace Holmes
Laura Huebner
Anna Johnston
Bethanie Kruse
Tobie Kunkle
Mitch Laursen
Melissa Long
Mindy L. Lorenz
Megan Malloy
Samantha Mancuso
Kiana Mathew
Ben McLaughlin
Sally Meginnis
Callie E. Messick
Ellen Mickle
Amanda Nelson
Lexie Newman
Katie O'Neal
Sarita Patnaik
Courtney Reeves
Kate Reynolds
Maggie Rudersdorf
Taylor Saalfeld
Lindsay Schulz
Amanda Shaff
Betsey Sibbersen
Alison Sievers

Chantelle Steggerda
Christine Stormberg
Kim Thompson
Kim Son Tran
Anna Turetsky
Matthew Twehous
Anna Vacha
Katherine Warner
Victoria Washington
Meg Welch (Vacanti)
Katie Williams
Teddy Woolman

Docents

Emeritus Docents are denoted with an asterisk ().*

Suzanne Arney*
Joanne Bonifant
Cathy Born
Nancy Brune
Marita Camp
Laura Chambers
Jean Circo
Barbara Donovan
Estelle Faier
Ethel Flannigan*
Elise Fowler*
Sara Foxley
Norma Fuller
Edith Godfrey
Alice Gooder
Linda Gordman
Milt Hanson
Jody Harvey*
Bob Hefflinger*
Veronica Hefflinger*
Jeanne Henry
Joyce Higgins*
Pegge Hlavacek*
Kate Holstein
Ila Dean Horn
Mary Irving
Karen Dix Johnson
Noreen Johnson*
Esther (Vernie) Jones
Barbara Lambries
Robert Lewis
Patricia Lontor
Sally Lusk
Maxine MacDonald
Marilyn Mangan
Linda Mathew
Ruth McKee*
Renee Mehrer
Teresa Meyer
Dorothy Morrow
Jean Munhall-Sitzman
Loy Nebergall*
Barbara Nelson

Rose Nelson
Dick O'Toole*
Mary Petty
William Pierson*
Lenore Polack
Jean Pollitt
Rita Price
Joan Quelette
Pat Ranney
Kathi Rotella
Jan Sanderson
Judy Schafer
Judy Schram
Mary Jo Schulte
Joan Scott
Margaret Shearer
Frances Sherrard
Toni Shreve
Nan Sibbersen
Jan Sinram
Arlene Smith
Jean Stillmock
Ellen Stoll
Mary Jo Stoll*
Pat Strecker
Jane Tan Creti
Doris Taulborg
Jenni Toebben
Violet Unger*
Sr. Adolorata Watson OSM

Joslyn Information

Assistants

Mary Ann Chaney
Elaine Dutton
Susan Henshaw
Barbara Maus
Mary Ellen McMahon
Lynda Mirvish
Alice Pauley
Frank Schepers
Anne Shaughnessy
Beverly Streba
Takaro Yazaki

Library

Linda Bray
Kathy Drefs
Kari Fossum
Rose M. Hill
Mary Marchio
Mike Miller
Mary Jean Offenberger
Jan Osten
Ron Perkins
Colin Quinn
Cynthia Vana

Membership

Jane Hagebush
Mary Jo Havlicek
Natalie Hering
Mary Hills
Sara Holmes
Bradley Johnson
Eva Johnson
Howard Lewis
Vera Lewis
Annette Massie
Mike Miller
William (Cody) Nolen
Pegg Noyes
Jan Osten
Pat Phillips
Jenna Polacek
Janel Rodriquez
Anne Shaughnessy
Frances Sherrard
Kim Singletary
Amy Slama
Mary Kay Smid
Marianna Stewart
Ruth Templemann
Marilyn Yeck

Museum Shop

Anne Shaughnessy

Thanks Also to Our "Special Occasion" Volunteers

In addition to the regular volunteers listed above, Joslyn Art Museum thanks the volunteers who gave of their time and talents for exhibitions, music series, and other special programs throughout the year. Thank you!

DONORS

Donor gifts are to Joslyn Art Museum and its associated foundations.

Endowment

Visio: The Joslyn Legacy

Visio: The Joslyn Legacy encompasses endowment and similar funds for operations, exhibitions, and acquisitions. The following are named funds that provide support for acquisitions, programs, and projects.

Ethel S. Abbott Art Endowment Fund
Milton R. and Pauline S. Abrahams
Library Endowment Fund
Center for Education Endowment Fund
Center for Western Studies Art
Endowment Fund
Center for Western Studies
Endowment Fund
The Conboy Fund
The Jack Drew Endowment for 18th-
and 19th-Century Art
Gilbert M. and Martha H. Hitchcock
Endowment Fund
Lawrence R. and Jeannette James Art
Acquisition Fund
Sarah H. Joslyn Endowment Fund
Peter Kiewit Endowment Fund
Carolyn J. Scott Exhibition Fund
Robert H. and Mildred T. Storz
Endowment Fund
Gretchen Swanson Velde Joslyn
Endowment Fund

In addition to the named funds, the donors listed below have made outright gifts, estate gifts, or irrevocable planned gifts to ensure that Joslyn Art Museum's tradition of excellence continues for years to come. The gifts also represent a shared faith in the future of Joslyn as the region's major resource for the collection, preservation and interpretation of the visual arts.

Anonymous (14)
Pauline B. Allen
Marian and Harold Andersen
Jo Anderson
Joan Angotti
The Anschutz Foundation
Nancy Askew
Jack Barnhart
Margaret and Hubert Bath
Thelma Beckler
Janet Bellinger
Dorothy and Lyman Bennett
Robert Benzel
James Bergquist
Barbara Birmingham

Bella and David S. Block
(Margaret Block)
Gertrude E. Brinkman
Nancy and Dan Brune
Barbara and James Call
Eric Carlson
Betty and Sydney Cate
Joseph and Robert Cornell Memorial
Foundation
James Czarnecki
Shirley Daley
Jack Drew
Margre and Charles Durham
Del J. Ellis
Jane and John Ellsworth
Eve Fisher
Mary E. Flannigan
John K. Fong
Norma and E. James Fuller
June and Ed Gauhari
Dodie and Elmer Gerfen
Elinor Greenfield
Sharon G. Marvin Griffin
Agnes Hamilton
Alice W. and Berchel H. Harper
Mary Jo Havlicek
Marianne and Fred Hawkins, Jr.
Mary and Charles Heider
Anunt Hengtrakul
Cecil Hicks
Ursula and Henry Hoffman
Mary and Richard Holland
Ila Dean Horn
Chris Pilcher and Thomas Huerter
Roger Hughes
Gilbert Johnson
Richard Jourdan
Leona and William Kernen
Helen Kistle
Helen and Ted Kolderie
Jack Kostich
Susie and Steve Kupka
Marian Leary
Ida and Walter Lenz
Howard Lewis
L. Zenaide Luhr
Sally and Graham Lusk
Irene and Joseph Malek
Francis T. B. Martin
Joan and Robert Masterson
Helen and Frank Matthews
Janet and James McClymond
Mary Pat and Richard McCormick
Cynthia and Thomas F. McGowan
Lyra Ann and Charles Monasee
Joel Faires and Dean Naegele
Barbara and Michel Nelson
Judy and Ron Parks

Patty Patrick
Beverly and Gerald Pearson
Lenore and Joseph Polack
Rita M. Price
Marjorie Quinlan
Alice Naomi Reineke
Ephraim L. Marks and David M. Rice
Anne and David A. Rismiller
Polly and Jack Savage
Joan and Michael Schneeweiss
Terri and Phil Schrager
Rose Schupak
Suzanne and Walter Scott
Margaret Shearer
Eve and Frederick J. Simon
Nancy and Larry Smith
Shirley and Michael Sorrell
Edward F. Stapowich
Janice D. and Larry D. Stoney
Janet S. and Willis A. Strauss
John Thomas
Isabella B. Threlkeld
Dorothy and Stanley Truhlsen
Dorothy and Allan Tubach
Alice Ungar
Vaclav Vytracil
Patricia A. and Judd F. Wagner
Webster Family Foundation
Louise Wickstrum
Wiesman Family
Robert Getscher and Harry Wilkinson
Collection
Louis Williams
Philip J. Willson
Gail W. and Michael B. Yanney
Barbara P. and Robert P. Youngman

Exhibitions

Stan Douglas: *Inconsolable Memories*
Government of Canada
Energy Systems Company
Carmen and John Gottschalk
Omaha Steaks International
Suzanne and Walter Scott
Marilyn Offutt Sullivan and
Richard Sullivan
Gail W. and Michael B. Yanney
David Zwirner Gallery

Dirk Skreber: *Na(h)tanz 2.0*
Energy Systems Company
Terri and Phil Schrager
Frederick J. Brown:
Portraits of Music I Love
Beverly and Gerald Pearson
Joan L. Gibson and Donald F. Wurster



(LEFT) Russia's Age of Elegance Gala honorary chairmen Robert and Judy Bates (left) with Joslyn Art Museum Association co-chairmen Kelly Thedinger (right) and Cathy Perry (far right), June 3

(BELOW RIGHT) U.S. Ambassador to the Russian Federation Alexander Vershbow and his wife, artist and jewelry designer Lisa Vershbow (left), with Cindy and Mogens Bay at the Russia's Age of Elegance Gala, June 3

Mir Iskusstva: Russia's Age of Elegance

Cynthia and Mogens Bay
CBSHOME Real Estate
Clear Channel Communications
Commercial Federal Bank
Douglas County Commissioners
Drew Foundation (Jack, Helen, Louis, and Jean)
Charles W. Durham
Energy Systems Company
First National Bank
Mercedes-Benz of Omaha
Nebraska Department of Travel and Tourism
Omaha Steaks International
Omaha World-Herald
Wiesman Development
Gail W. and Michael B. Yanney

Lisa Vershbow: Four Years in Russia
Cynthia and Mogens Bay

Out of the Wild: John James Audubon's Four-Legged Mammals of North America

Lynne and John Boyer
City of Omaha
HDR, Inc.
Mary and Charles F. Heider
KPMG
Robert H. Storz Foundation

Picasso: Master Printmaker
Douglas County Commissioners
Mary and Charles F. Heider
Omaha World-Herald
Lenore Polack
Ann and Ken Stinson
Philip J. Willson

Gifts for Operations, Events, Programs, and Exhibitions
(Gifts to Joslyn Art Museum or one of its support groups)

\$100,000 and above

Drew Foundation (Jack, Helen, Louis, and Jean)
Charles W. Durham
Peter Kiewit Foundation
Suzanne and Walter Scott
Gail W. and Michael B. Yanney

\$50,000-\$99,999

Douglas County Commissioners
First National Bank
Carmen and John Gottschalk
Alice Dale Harper Estate
Mary and Charles F. Heider
Mary and Richard Holland
Nancy and Michael R. McCarthy
Eileen and Wayne Ryan

\$25,000-\$49,999

CBSHOME Real Estate
Dr. C.C. and Mabel Criss Memorial Foundation
Energy Systems Company
Gladys and Roland Harriman Foundation
Nebraska Arts Council
Omaha Steaks International
Peter Kiewit Sons', Inc.
Ann and Ken Stinson
Robert H. Storz Foundation
Sunderland Foundation

\$10,000-\$24,999

Blue Cross Blue Shield of Nebraska
Betty and Sydney L. Cate
Catholic Mutual Group
City of Omaha

ConAgra Foods Foundation
Dixon Family Foundation
Barbara and William Fitzgerald
Carol Gendler
Government of Canada
Judy and Terry Haney
Iowa West Foundation
Leona and William Kernen
Wende Lindsey-Kotouc and John F. Koutouc

Mutual of Omaha Companies
Lenore Polack
Terri and Phil Schrager
Marilyn Offutt Sullivan and Richard Sullivan

Gilbert C. Swanson Foundation, Inc.
Lynn and Gerald Timmerman
Margie and James Timmerman
Philip J. Willson
Zurich
David Zwirner Gallery
U.S. Cellular

\$5,000-\$9,999

John M. Bates Charitable Trust
Cynthia and Mogens Bay
Margaret Block
Burlington Resources Foundation
Commercial Federal Bank
Dillon Foundation
Joan L. Gibson and Donald F. Wurster
HDR, Inc.
The Hawks Foundation
Jefferson Pilot Financial
KPMG
Lexus of Omaha
Nebraska Department of Travel and Tourism
Dian Moore
Beverly and Gerald Pearson
Qwest Foundation
Anne and David Rismiller
Eve and Frederick J. Simon
Webster Family Foundation
Whitmore Charitable Trust
Wiesman Development



\$1,000-\$4,999

Aaron Ferer and Sons' Company
 America First Foundation
 Lynne and John Boyer
 ConAgra Foods Company
 Michael Faust
 Burdette Fredrickson
 Norma and E. James Fuller
 Lamson, Dugan and Murray, LLP
 Delores Owen
 Edward and Lida Robinson Charitable
 Trust
 Jane and Thompson Rogers
 SilverStone Group
 Union Pacific Corporation
 U.S. Bank Corporation

\$500-\$999

Ardyth Low

\$100-\$499

Anonymous
 Michael Howard
 Benny Kay
 Edward O'Toole
 Anne Shaughnessy
 Edward F. Stapowich Estate
 Union Pacific Employee Funds

Art Purchase

ADG Capital, LLC
 Arader Tree Service, Inc.
 W. Graham Arader III
 Frank Benevento
 Benson Consulting, Inc.
 Ann and Steve Berzin
 Robert Billingsley
 Terri and Dennis Bovin
 Casimir Capital, LP
 Peter DeSorcy
 Lynn and Wesley Edens
 Del Ellis
 Patrick Gerschel
 Marcie and John Golden
 Diane and Jay Goldsmith
 Victoria and Mark Graham
 Albert Gunther
 J.N. Bartfield Galleries, Inc.
 Marc Letellier
 Jill Matichak
 Donna Pearson Josey
 Anne and David Rismiller
 Richard Sandhaus
 John Scherlis
 Terri and Phil Schrager
 Jeffrey Siegal
 Karen and Howard Spey
 Zaplin-Lampert Gallery

Patron Circle**for Contemporary Art
(donors group for the acquisition of
contemporary art)**

ConAgra Foods Foundation
 Carmen and John Gottschalk
 Mary and Richard Holland
 Chris Pilcher and Thomas J. Huerter
 Kim and Bruce Lauritzen
 Lozier Foundation
 Joan and Robert Masterson
 Omaha Steaks International
 Karen and Doug Riley
 Terri and Phil Schrager
 Suzanne and Walter Scott
 Ann and Ken Stinson
 Philip J. Willson
 Gail W. and Michael B. Yanney

**Gifts to the Art Reference Library
(Donors of art-related books, including
memorial or honorary books, or cash
gifts for books, totaling \$100 or more)****Cash gifts for book purchases****\$1,000 or more**

Norma and E. James Fuller

Gifts of art-related books**\$1,000 or more**

John Fong

\$100-\$999

W. Graham Arader III
 Dean Naegle and Joel Faires
 Gail and Michael B. Yanney

**Honorary and Memorial Gifts
(Donors with annual memorial/honorary
gifts to Joslyn totaling \$100 or more)**

Robert A. Berey
 In memory of William Bures
 Margaret and R. W. Blumenschein
 In memory of Delford U. Boyer
 Ann and James Bonham
 In memory of Mildred Roling
 In honor of Diane Nelson
 Barbara and James Call
 In honor of Hal Maurer
 Mary and Joseph Daugherty
 In memory of Bill Strauss
 Donna Grote
 In memory of Harold Cook
 Barbara Hayes
 In memory of Dave Janke
 Wallace Hopkins
 In memory of Delford U. Boyer
 Dana E. Kaufman
 In honor of Joseph Erman

P.J. Morgan Real Estate

In memory of William Bures
 Trilety G. Wade
 In memory of Dave Janke
 In memory of Cory Kneifel
 Gail W. and Michael B. Yanney
 In memory of Margaret Davis
 In memory of Frances Batt
 In memory of Betty Abbott
 In memory of Harlan Noddle

Gifts In-Kind**(Gifts valued at \$100 or more to Joslyn
or one of its support groups)**

AAA Rents
 Ameristar Casino and Hotel
 Kay Armstrong
 Bemis Center for Contemporary Arts
 Blue Cross Blue Shield of Nebraska
 Jan Buckingham
 Clear Channel Communications
 ConAgra Foods Company
 Doug Dushan
 Elman and Company
 Emspace Group
 Flat Iron Café
 Harrah's Council Bluffs
 Homer's Music and Gifts
 Jefferson Pilot Financial
 KETV
 Lulu's Unique Boutique at Legacy
 Mae Farmer Fashion Shop
 Mercedes-Benz of Omaha
 Midwest Airlines
 Laurel and David Murphy
 Neon Products Company, Inc.
 Old Market Habitat
 Omaha Steaks International
 Omaha World-Herald
 One Drake Place
 Oriental Trading Company
 Panera Bread
 Paper Bizarre
 Q 98.5
 Quail Distributing
 Kathryn and Colin Quinn
 The Reader
 Regal Plastic Supply
 Karen and Doug Riley
 Steven's Jewelers
 Monte Thompson
 Union Pacific Corporation
 Upstream Brewing Company
 U.S. Cellular
 Voila! Blooms in Dundee
 Waitt Media
 Adam Whitney Gallery
 Zurich

Passport Partners (\$100,000)

Passport Partners is a cultural partnership between The Nebraska Medical Center, University Medical Associates, the University of Nebraska Medical Center, and Joslyn Art Museum with the mission to offer a variety of art-focused opportunities, both at Joslyn and at the medical center campus, to over 10,000 employees and students.

The Nebraska Medical Center
University Medical Associates
University of Nebraska Medical Center

Corporate Partners (\$250-\$1,500)

Corporate Partners is a corporate giving initiative designed for the purpose of offering exclusive opportunities for company employees to be introduced or become involved at Joslyn Art Museum.

ACI Worldwide, Inc.
Baird Holm Law Firm
Fraser Stryker Law Firm
Krispy Kreme Donuts
The Waldinger Corporation

Businesses Supporting Young Art Patrons Programs

America First Foundation
Jefferson Pilot Financial
Olley the Trolley
Union Pacific Corporation
Upstream Brewing Company

Businesses and Institutions Involved in Membership Campaigns

Participating with Matching Gifts

ACI Worldwide, Inc.
AON Risk Services
Alegent Health
America First Companies
Baird Holm Law Firm
Barnhart Press
Borhseim's Fine Jewelry and Gifts
CSG Systems, Inc.
DLR Group, Inc.
Domina Law, PC, LLO
Energy Systems Company
Farmers National Company
First Data Resources
First Westroads Bank
Fraser Stryker Law Firm
Great Western Bank

HDR, Inc.
Jefferson Pilot Financial
John Day Company
Kiewit Corporation
Kirkham, Michael and Associates
Kutak Rock, LLP
Leo A. Daly Company
Lieben, Whitted, Houghton,
Slowiaczek, and Cavanagh, PC, LLO
Metropolitan Utilities District
MidAmerican Energy Holdings Company
Mutual of Omaha
No Frills Supermarket
Northern Border Partners, LP
Northern Natural Gas
Omaha Steaks International
Omaha Public Power District
REDSTONE Communications
The Scoular Company
Security National Bank
The SilverStone Group
Union Pacific Railroad
U.S. Bank of Nebraska
Valmont Industries, Inc.
Wells Fargo
Woodmen of the World Life Insurance

Participating

AIM Institute
Ameritrade Holding Corporation
Bellevue University
Bridges Investment Counsel, Inc.
CBSHOME Real Estate
Carlson Hospitality Worldwide
City of Omaha
College of Saint Mary
Commercial Federal Bank
Council Bluffs Public Schools
Creighton University
Data Transmission Network Corporation
Deloitte
First National Bank of Omaha
Holland Basham Architects
(i) Structure, Inc.
Koley, Jessen, PC
McCarthy Group, Inc.
McGill, Gotsdiner, Workman & Lepp,
P.C. LLO
Metropolitan Community College
Omaha Public Libraries
Omaha Public Schools
Omaha World-Herald
Physicians Mutual Insurance Company
Qwest Communications
Tenaska
United States Strategic Command
United Way of the Midlands

Donating Gifts

A Hill of Beans Coffee
Ameristar Casino and Hotel
Anthony's Steakhouse
BeBos
Bene Pizza and Pasta
Cinemark Movies 8
Cookies by Design
Crescent Moon Ale House
Crowne Plaza Grille
Delice European Bakery and Café
Deb Covert, Independent Travel
Specialist, AAA Travel Nebraska
Dimensions Hair Salon
Doubletree Hotel
Durham Western Heritage Museum
Famous Dave's Bar-B-Que
The Flatiron Café
Goldberg's II Dundee
Golden Corral
Henry Doorly Zoo
Lansky's Pizza Pasta & Philly Steak
Sandwiches
Lauritzen Gardens
Market Basket
Millard Roadhouse
Noodles and Company
Omaha Steaks International
Panera Bread
Pathways Book Store
Petrov's Restaurant
P.F. Changs
Spaghetti Works
Star Cinema
Starbuck's Coffee Co.
T G I Friday's
Takechi's Jewelers
Three Happiness Express
Upstream Brewing Company
V Mertz Restaurant
Wheatfields
Wendy Deane Gallery



BODMER SOCIETY AND CONTEMPORARY ART SOCIETY MEMBERS

Bodmer Society

(supporting the Margre H. Durham
Center for Western Studies)

*Founding Members of the Bodmer
Society are denoted with an asterisk (*).*

Kathleen and Robert H. Ahmanson*
Marian and Harold W. Andersen*
Judy and Robert Bates*
Cynthia and Mogens Bay*
Patricia and Richard Bell
Lynne and John Boyer*
Eileen and Henry Brown
Susan A. Buffett
Barbara and James Call*
Betty and Sydney Cate*
Carol and Brad Chapman
Jane and LeRoy Crosby
Pamela and James Crowe*
Mary and Joseph Daugherty*
Robert B. Daugherty*
Dawn and Sid Dinsdale
Beverly and William Donaldson
Charles W. Durham*
Sue Fletcher
Katherine and William Foxley*
Carmen and John E. Gottschalk*
Judy and Terry Haney
Rhonda and Howard Hawks*
Mary and Charles Heider*
Mary and Richard Holland*
Richard Hunt*
Carole and Robert Julian*
Ruth and James Keene, III*
Hani and John Kenefick*
Leona and William Kernen*
Linda Klaasmeyer
Gail and Harry A. Koch, Jr.*
Mary and Clarence L. Landen, Jr.
Kim and Bruce R. Lauritzen
Susan and Michael Lebens
Mary and Dennis Lundgren*
Sally and Graham Lusk
Joyce and Carl Mammel*
Kristin and Christopher Mason
Helen and Frank Matthews*
Beverly and Harold Maurer
Cindy and Thomas F. McGowan*
Carolyn Meissner
Dian J. Moore*
Roger F. Morrison
Ann and A. Ralph Navaro
Shirley J. and Daniel P. Neary
Anne and John P. Nelson
Aldine A. Nordgren
Lenore Polack
Marlene and J. Joe Ricketts
Karen and Doug Riley
Anne and David A. Rismiller*

Jane and Thompson Rogers
John P. Schlegel
Lori and W. David Scott
Suzanne and Walter Scott*
Eve and Frederick J. Simon*
Jean and C. Mickey Skinner*
Peggy and David L. Sokol*
Ira Spanierman and Gavin Spanierman
Ann and Kenneth Stinson*
Janet S. Strauss*
Phyllis and Del Toeppen
Dorothy and Stanley M. Truhlsen*
Nancy and John Webster*
Gail W. and Michael B. Yanney*

National Chapter of Members

Chris Arader
Graham Arader
Carol and Jack Asher
Fran and Lenox D. Baker, Jr.
Frank A. Benevento
Steve Berzin
Robert Billingsley
Terri and Dennis Bovin
Wendy and Henry Breck
James Brodell
Peter DeSorcy
Douglas C. Eby
Lynn and Wesley Edens
Michael Engl
Susan and Stephen C. Felker
Michael Frost
Patrick Gerschel
John Golden
Diane and Jay Goldsmith
Victoria and Mark Graham
James William Guercio
Martha and Albert W. Gunther
Paul Tudor Jones, II
Mark Kalimian
Marie and James P. Kelly
Richard Lambert
Betty and Larry A. Larsen
Marc Letellier
Orrin Lippoff
Alex Ludwig
Jill Matichak
Gian Matteo Lo Faro
Aubrey Kerr McClendon
James Parks
Donna Pearson Josey
Tim Peterson
Cynthia Phipps
John A. Ross
Richard Sandhaus
Richard Sands
John Scherlis
Jeffrey Siegal

Susan and Dwight Sipprelle
Edgar O. Smith
Karen and Lawrence Solomon
Claire and Stephen Sordoni
Karen and Howard Spey
Jonathan Stern
Elisabeth and Karl Swann
Robbie and Samuel Vickers
John Wilson
Mark Zaplin



Bodmer Society chairman Mary Daugherty (center) with Bodmer Society members Lynne Boyer (left) and Ann Stinson (right) at the group's annual rendezvous! dinner, September 26

Contemporary Art Society
(special interest group directly
engaged with contemporary art)

Kathleen and Ross Bellinghiere
Phann Benscoter
Leslie Berry
Frances and Louis Blumkin
Myriel Boes
Djel Ann and Paul Brown
Kim and Randy Brown
Anne and Stephen Bruckner
Sandi L. E. and William C. Bruns
Eddith Buis
Leslie and Steve Byers
Larry Carlson
Rkachea and Bruce Carpenter
Joan Desens and Simon Carr-Ellison
Sylvia B. Cohn
Rex Daugherty
Karen and J. Robert Duncan
Ruth and Joe Erman
Jill and Mike Erman
Estelle S. Faier
Larry Ferguson
Catherine and Terry Ferguson
Sara M. Foxley
Rosalie Friedman
Norma and E. James Fuller
Carol Gendler
Carmen and John E. Gottschalk
Carol J. and Howard F. Hahn
Mary and Charles Heider
Shari Hofschire
Mary and Richard Holland
Angela and Stanley J. How
Chris Pilcher and Thomas J. Huerter
Frances and Richard Juro
Kim and Bruce Lauritzen
Joan and Martin J. Lehr
Dianne and Allan Lozier

Joan and Robert Masterson
Donna Menolascino and Karl Momsen
Mary and John C. Mitchell, Sr.
Maggie and Robert E. Mundy
Shirley J. and Daniel P. Neary
Sharee C. and Murray H. Newman
Frederic P. Ogren
Ronald J. Palagi
Lenore Polack
Polina Poluektova
Mary Jane (Kop) Ramsey
David M. Rice
Karen and Doug Riley
Barbara T. Rips
Robert Rogers
Jane and Thompson Rogers
Jan Buckingham and Lauren Ronald
Terri L. and Phillip Schragger
Suzanne and Walter Scott
Mary and Kurt Shafer
Stacy and Bruce Simon
Eve and Frederick J. Simon
Todd Simon
Heidi and Mark Singer
Jeanne and Colin Smith
Annette and Paul G. Smith
Ann and Kenneth Stinson
Marilyn Offutt Sullivan and Richard
Sullivan
Monte and Duane Thompson
Gail and Irving Veitzer
Joodi and Norman Veitzer
Jan and Charles Vrana
Patricia and Judd Wagner
Richard Weisman
Anne and Arnold Weitz
Donna and Perry T. Williams
Philip J. Willson
Mary and John K. Wilson
Joan L. Gibson and Donald F. Wurster
Gail W. and Michael B. Yanney



Contemporary Art Society members (left to right) Sara Foxley, Joan Gibson, Don Wurster, Karen Riley, Sylvia B. Cohn, and Philip J. Willson join Barrie Mowatt (back), Executive Director of the Vancouver International Sculpture Biennale: Open Spaces 2005/2006, and American artist John Henry (far right) as he paints his piece Jaguar, installed in Devonian Harbour Park as part of the public art exhibition and festival, during the CAS art trip to Vancouver, Canada, September 23-26



Contemporary Art Society chairman Philip J. Willson (left) looks on as Omaha artist Jun Kaneko (right) addresses CAS members during the group's visit to his new facility, KANEKO, July 6

PATRON MEMBERS

Patron Benefactor (\$10,000 and above)

Marian and Harold Andersen
Carmen and John Gottschalk
Energy Systems Company

Patron Governor (\$5,000 to \$9,999)

Judy and Jack Baker
Susan A. Buffett
Sylvia B. Cohn
Charles W. Durham
Sue Fletcher
Kathy and Wayne Gary Gates
Rhonda and Howard Hawks
Nancy and David Johnson
Wende Lindsey-Kotouc and John F.
Kotouc
Kim and Bruce Lauritzen
Helen and Frank Matthews
Cindy and Thomas F. McGowan
Marlene and J. Joe Ricketts
Karen and Doug Riley
Jane and Thompson Rogers
Suzanne and Walter Scott
Lin and Michael Simmonds
Eve and Frederick J. Simon
Peggy and David L. Sokol
Ann and Kenneth Stinson
Janet Strauss
Valmont Industries, Inc.
Nancy and John Webster
Barbara and Wallace R. Weitz
Mary and John K. Wilson
Gail W. and Michael B. Yanney

Patron Director (\$2,500 to \$4,999)

Cynthia and Mogens Bay
Ann and James Bonham
Carol and Brad Chapman
Mary and Joseph Daugherty
Catherine and Terry Ferguson
Tricia and Stephen Frary
Marianne and Fred Hawkins, Jr.
Mary and Charles Heider
Marilyn and Richard Holland
Mary and Clarence L. Landen, Jr.
Dianne and Allan Lozier
Joyce and Carl Mammel
Nancy and Michael R. McCarthy
Lenore Polack
Anne and David A. Rismiller
Julie and John C. Schroeder
Marilyn Offutt Sullivan and Richard
Sullivan

Patron Curator (\$1,000 to \$2,499)

Hap Abraham
Robyn and Fred Amis
Marcia and Frederick Backer
Clyde R. (Bob) Bell
Dorothy Bennett
Sharon and Randy Blackburn
Frances and Louis Blumkin
Barbara and James Call
Elizabeth and John Carroll
Betty and Sydney Cate
Pamela and James Crowe
Robert B. Daugherty
Beverly and William Donaldson
Ruth and Joe Erman
Eve Fisher
Norma and E. James Fuller
Nancy and Thomas Gallagher
Barbara and J. Peter Gattermeir
Louise Miller Golan
Elinor Greenfield
Debra and Bruce Grewcock
Janis and John Haggstrom
Judy and Terry Haney
Cynthia and Herbert A. Hartman, Jr.
Elizabeth Davidson and Clark Hodder
Claire Hubbard
Richard Hunt
John J. Jelinek
Donna L. and Matthew J. Johnson
Esther and Carter Jones
Louise and J. Brooks Joyner
Rae and Thomas R. Keogh
Myrna and Robert F. Krohn
Jackie Law
Eleanor Malot
Beverly and Harold Maurer
Sharon McGill-Miles
Roberta and Norman G. Miller
Lyra Ann Monasee
Dian J. Moore
Jan Mactier-Moriarty and J. Michael
Moriarty
Diane and Ben Nelson
Anne and John P. Nelson
Sharee C. and Murray H. Newman
Nancy F. and Harlan J. Noddle
Loretta S. and Douglas E. Patterson
Beverly and Gerald (Bud) Pearson
Sandra and James Reding
Donna and Edward T. Robinson, Jr.
Carol and W. Lee Rowe
Cynthia and Charles Schneider
Ruth Lind and J. William Scott

Mary and Anthony Seina
Phyllis Sherman
Carol and Drexel J. Sibbersen, Jr.
Anne G. and Alan D. Simon
Stacy and Bruce Simon
Todd Simon
Lynette and William Singer
Darlene M. and Reuben T. Swanson
Dorothy and Stanley M. Truhlsen
Dorothy and Allan Tubach
Diana and Dennis P. Walker
Philip J. Willson
Kathy and Rodney Woods

Patron Collector (\$500 to \$999)

Nancy and David Abboud
Diane E. and Robert M. Ames
Phyllis and Harvey Aronson
Nancy Askew
Marcia Baer
Anne Stuart Batchelder
Betty and David A. Baxter, Jr.
Sally and Frederick Bekins
Mary Ann and Thomas Belford
Joanne and Robert Berkshire
Jody Bloom
Sylvia and Gary Bohn
Sally and Edson Bridges II
Mark J. Brodkey
Eileen and Henry Brown
Jean and Bruce Buehler
Susan and Louis Burgher
Susan Butler
Jan and Richard Caulk
Phyllis and James Chapin
Carole L. Christ
Joan and Donald Cimpl
Mary Jo and Richard Coffey
Laura and James Commers
Carol and Benton Copple
Charlotte Conner and William Dana
Anne and James V. Dolan
Debby Durham
Lynette A. and Marvin B. Dvorak
Paula M. and James O. Ellis, Jr.
Darlynn and Tom Fellman
Terry and Randolph M. Ferlic
Cornelia Field
Debbie and Rex Fisher
Pam and William Fleming
Nancy and David Friedland
Thama Lee and Willard I. Friedman
Edith A. Gallagher
Marjorie and Dan Gardner
Thomas D. Gensler



*Patron Member Brunch,
September 11*

Kay Lynn and John C. Goldner
Sharon Marvin Griffin and William
Griffin
Judith and John D. Griffiths
Barbara and David Haggart
Janis and John Haggstrom
Ramona and Deryl F. Hamann
Elinor and Robert W. Hansen
Melissa Marvin and Geoffrey Hartig
Karen and Kim Hawkins
Julie and David Hefflinger
Marilynn and William J. Hetzler
Bonnie Hickey
Jeannette and Lawrence R. James
Lawrence R. James, II
Mary and Thomas Jetton
Gaile and Owen Johnson
Noreen and William A. Johnson
Richard A. Jourdan
Connie and Patrick Jung
Frances and Richard Juro
Helen and Richard W. Kelley
Karen and Howard Kennedy
Michelle and Peter Knolla
Steph E. and Jack J. Koraleski
Jackie and Terry Kroeger
Diane and James E. Landen
Elizabeth D. Lauritzen
Marian Leary
Grace and Earl Leinart
Deana and Michael B. Liddy
Jennifer Toeppen and Chris Link
Ann and Allan Mactier
Tove and Thomas L. Manuel
Lynn Marchese
Dorothy and Daniel L. McKinney
Suzanne and Joseph McNamara
Susan and Steven McWhorter
Tania and Terry Moore
Elizebeth Murphy

Janis Nelson
Donna and Ralph Nelson, Jr.
Jan Nurnberger
Delores Owen
Mary and Richard J. Parrish
Barbara and Donald J. Pavelka
Catherine V. and Troy W. Perry
Patricia and Gerald Pfeffer
Liza and Jerry Porter
Rita Price
Jo and Rick Prusha
Kitty and John Ransom
Ivel and John Reed
Sandra Morar and Bruce Rohde
Jan Buckingham and Lauren M. Ronald
Carol and G. Richard Russell
Constance Ryan
Rebecca and Kirk Samuelson
Molly and Toby Schropp
Amy Scott
Margaret Shearer
Nancy and Richard Shugrue
Klayton C. Killion and Robert D. Siniard
Jeanne Skutt
Teddi and Timothy L. Slattery
Ellen and Richard Slosburg
Stanley Slosburg
Smith, Bourne & Associates, Inc.
Linda and John Stagg
Michele R. Marsh and John Terry
Thomas D. Thalken
Jann and Lawrence Thomas
Phyllis and Del Toeppen
Margo Tucker and E. J. Tucker
Jan and Charles Vrana
Duane D. Warden
Anne Thorne Weaver
Pam and Michael C. Weekly
Diane and Richard Westin
Judy and Gale Wickersham
Mary and John Wilson, II
Joan L. Gibson and Donald F. Wurster

Supporting Members of Young Art Patrons (\$150):

Amy and Stuart Chittenden
Arnel Citurs
Calvert Collins
Meg and Joel Davies
Erin Emmons
Mark Guilliatt
Jennifer Magilton Hinrichs and Mark
Hinrichs
Emily and Michael Jung
Heike and Adam Langdon
Jon Rehm
Cathy and Matt Saathoff
Rachel Slosburg
Michael Stratta
Candace Tielebein
Sabrina and Zachary Weiss
Alexi and Scott Wellman

CONTRIBUTOR MEMBERS

Contributor members share an enthusiasm for the arts and a firm belief in Joslyn's important role in the community.

Contributor Members – Sustaining (\$250 to \$499)

Jamie and Tom Barker
Barbara Ann and Frank Blank
Diane and Gary Boisen
Barb and Jim Brentlinger
Mary P. Clarkson and Robert V. Broom
Susan J. and George K. Burcum
Susan E. Conine
Aurel Couch, Jr.
Robert H. Culver, Jr.
Rosemary G. Daly
Mary and Hal Daub
Janelle F. and Leon F. Davis
Dominick DiMaio
Colleen and Roger Dilley
Linda A. Dobry
Rosemary and Bernard Duhaime
Scott Dye
Mary J. and William S. Ellis
Deborah and Kenneth Elson, Jr.
Janice and John D. Fonda
Rae Rose and Robert Fowler
Sandra B. and Howard J. Friedman
Frances H. and Ray D. Gaines
Joanne S. and Philip L. Gilmore
Walter B. Graham
Belinda B. and Carl B. Greiner
Ibby B. and John W. Hancock
Adele A. and Ted Hazer
Marianne and Carr E. Heaney, Jr.
Tracy T. and Robert N. Hibbard
Mary L. and Thomas H. Holley
Maxine and Ross Horning
Roger Hubbard
Sheri and Steve Idelman
Carolyn and George M. Ireland
Mary R. and Paul C. Jessen
Phyllis and John Jeter
Dale E. Johnson
Judith and Joseph G. Johnston
Fanny S. Jones
David Karnes
Nancy L. King
Renee and John E. Kizer
Mike Klug
Victoria and David A. Krecek
Earl R. Kreins
Mary Ellen and Charles Krobot
Janet and C. Rex Latta
Bobette and Jay R. Lerner
Sina J. Linman
Trudy and Larry Lundquist

Sally L. and Michael D. Mann
Joan V. and John J. Matoole
Dara J. Spivak and Robert L. McAnally
Mia Nagy and Tom McGinn
Robin Behlers and Paul Mileris
Judge Lindsey Miller-Lerman
Tom S. Miya
Mary and John W. Monson
Michelle and Mario Mota
Rozanne and Duncan Murphy
Andrea M. and W. Don Nelson
Christine W. and David P. Nikunen
Carol and Charles Novich
Mary E. Helms and Kenneth R. Olson
Orville A. Olson, Jr.
Janet and Stephen Papenfuss
Catherine and Richard Pedersen
Lynn M. and Bradley A. Perry
Dorothy Peters
Cassandra J. and Gary A. Pietrok
Winifred and Lewis Pinch
Betty Foster and Chuck Powell
Jane and Ken Power
Marjorie A. Quinlan
Teri A. and Ronald N. Quinn
Izen I. and Neal S. Ratzlaff
Virginia A. and Martin P. Reagan
Beatrice Reimers-McLaughlin

Shelly and Stanley H. Schack
Joanne and James R. Scott-Miller
Diane and Lawrence F. Shackman
Ann and Frank C. Sidles
Mary J. McNamee and Kieth A. Simmons
Marilyn and Mike Sitorius
Patty L. Skwarek
Martha and D. David Slosburg
Jeanne and Colin Smith
Jeannette A. and H. Wayne Smith
Barbara Rodak and Gregory H. Sovey
Ann L. and Gene Spence
Betsy J. and Lynn A. Stephenson
Nancy H. Sunderland
Patricia and Dale TeKolste
Leslie and Daniel Thiele
Jean M. and Richard B. Tobin
Linda R. and Ronald L. Wax
Sue L. and Tom Weidner
Anita L. Wheeler
Cynthia and David Wiesman
Judy and James H. Wigton
Lori L. and Stephen H. Williams
Nancy L. and Philip M. Wolf
Phyllis J. and F. Marshall Zahller
Amy and Tim Zweiback
Judy Zweiback



The crowd fills the concert hall for formal remarks at the Russia's Age of Elegance Members Opening , June 4

**Contributor Members – Associate
(\$100 to \$249)**

Jennifer A. and Steve Ackerman
Margaret A. and John R. Allington
Jane G. Alseth
Robyn M. Bartlett-Andersen and
Eric J. Andersen
Beth and Jeff Andersen
Linda Matson Andersen
Martha M. Andersen
Carol A. Anderson
Carolyn O. Anderson
Phyllis and Robert Anderson
Theresa and Charles E. Andrews
Barbara and Jack Angus
Zach Atchley
Judith and John Atkins
Toni and James A. Bac
Emily R. and Joe H. Baker
Christine A. Webster and James Balters
Raul C. Banagale
Mary P. and Jack C. Barnhart
Rose Marie and George J. Basque
Judy M. and Robert D. Bates
Weenonah L. and Curtis K. Bayer
Clare and Duane Baylor
Nancy N. and George J. Behringer
Marilyn Beig
Liz Spivey and Dave Bergin
Mary Wampler and Philip J. Bierman
Pam and Dennis Bintner
Gary Birge
Judy and Frank Blazek
Sharon L. and Robert Bloechle
Chris L. and Ronald Blumkin
Barbara J. Bock-Mavis
Kathleen and Joseph R. Bohacek
Jeanne and Richard Bolamperti
Dorothy and David H. Bowman
Esther and Dan Brabec
Meroe L. Brady
Marti and Ken Briney
Tina and Dale A. Broekemeier
Karen and Doug Brouillette
Barbara C. and Gerald C. Brundo
Beverly and Edward Burchfield
Margaret A. and Robert F. Burns
Alicia Patterson and Mark Burshard
Catherine and Joseph Caggiano
Scot Caldwell
Theresa and Peter Canaday
Jim Carnicom
Anne D. and James A. Carroll
David Catalan
Kate A. and John J. Cavanaugh

John F. Cazahous, Jr.
Joyce and Elisabeth Chandler
Susan C. and Bob Chenoweth
Val Chickinelli
Gretchen and Fred Christensen
Diane and Lawrence Cochran
Susie B. and Marvin Cohn
Terrence Connelly
Cora and Maurice Conner
Wendy and Charles Cooper
Marcy and Ira Cotton
Terry L. and Harry J. Crook, Jr.
Mary (Peg) E. and Gary L. Crouch
Teri S. and Mark L. D'Agostino
Lynne Patricia and Richard Davidson
Rose Marie and Bill E. Davis
Janet and Fred Bunker Davis
Jean G. Day
Maureen and Michael Delich
Catherine Demes Maydew
Geraldine C. and Harold T. Dibelka
Gloria and Roy Dinsdale
Kim W. and Tom Dinsdale
Grace-Ann and E. David Dolak
Carol Jorde and David Domina
Fran and Duane Dowd
Carleton T. Draper
Karen and Patrick Drickey
Gayle P. and Sarge S. Dubinsky
Janice R. and Frank J. Duffy
Catherine and C.D. Duran
Bobbi Wells and John Dyer
Claire W. Eason
Irene and Gary G. Ecklund
Barbara J. Egerer
Marmie and R.J. Ellingson
Mary and Herbert A. Engdahl
Cathy and Todd Engle
Janet H. and Carl B. Eskridge
Bernadette and Paul Esposito
Barbara A. Fanning
Joan Squires and Thomas Fay
Matthew Ferer
Joan B. and John J. Ferguson
Marianne Festersen
Ellen H. and Leonard L. Finnegan, Jr.
Yoshiko and Edward J. Fitzpatrick
Diane L. and Jere W. Fonda
Robert J. Fonda
Barbara J. Ford
Marilyn and Don Forke
Marjorie J. and Robert M. Foster
Muriel Frank
Jan and Harris Frankel
Gail and Bruce Frasier

Nev and Gordon Fredrickson
Julie and Lance Fritz
Marlen Frost
John Gallagher
Marcia Gallner
Patricia and Dennis S. Garton
Dana and Steve Gehring
Helen S. and Louis G. Gerdes
Paula K. and Gary Glissman
Polly and Joe Goecke
Barbara and Gary L. Goldstein
Shirley and Leonard Goldstein
Barbara Goodrich
Linda and Jerry Gordman
Margaret J. and John L. Gordon
Wanda R. and J. Michael Gottschalk
Rosalie P. and Charles M. Graz
Beverly S. and Randall D. Greer
Nina and John J. Griffin
Virginia and Robert L. Grissom
Joan Hackett
Mendy Rose and Michael A. Halsted
Grace E. Hansen
Mildred E. and Malvin L. Hansen
Alice and Jerry D. Hanson
Jacquelyn and Roger K. Harned
Janice R. and Sheldon J. Harris
Mr. and Mrs. Darrald B. Harsh
Jody N. and Donald A. Harvey
Gregory A. Havelka
Mary Jo Havlicek
Susan and Michael Hawkins
Barbara J. and Douglas S. Heikel
Keith Hentzen
Beckie and Curt Hewett
Bruce Heyne
Joan C. and Peter W. Hill
Rose Hill
Norma J. Hilt
Karel and Charles Hinkle
Kristen L. and Gary L. Hoffman
Mary Anne and David E. Hoover
Elizabeth and Donald C. Hosford, Jr.
Anne Houlihan
Kayla and Bob Howard
Barb and Robert E. Huettner
Annette and Steven Huff
Ann B. and Gerald L. Hug
Roger M. Hughes
Mary Beth and Daniel E. Hunt
Ed Hunt
Nadine and Jean Hunter
Carolie Hunting
Ginny and Dale O. Inglis
Maria C. and Dean G. Jacobsen

Jayne L. Timmerman and Dan L. Jaksich
 Teresa Meyer and Jim Jarazbek
 Eva M. and Burton D. Jay
 Deby Johnson
 Gilbert D. Johnson
 Patricia and Gordon F. Johnson
 Mary K. and Robert D. Johnson
 Cheri Jones
 David Jones
 Jane Bunker Jones
 Elizabeth and Jerry Jones
 Elizabeth J. and Kevin M. Joyce
 Ronald J. Kafka
 Patricia and Andre Kalil
 Sally and Gary Kaplan
 Elizabeth Scott Karpf
 Beverley and F. William Karrer
 Renee and Sanford Kasner
 Audrey and Richard F. Kauders
 Jan and Victor Kensler
 Dale Kent
 Susan E. and Robert M. Knapp
 Susan and Tom Knight
 Glenda K. Knowles
 Amy and Brad L. Knuth
 Jean and Donald H. Korff
 Joan W. Kriegler
 Victoria and Kenneth Kroeker
 Janet A. and H. Frederick Kuehl
 Shirley Kulakofsky
 Patty and David Kunsemiller
 Carol A. and Michael J. LaCroix
 Colleen C. Langenfeld
 Lois J. Inskeep and Lorinda Langner
 Al and Deb Larsen
 Clark Lauritzen
 Phyllis A. and Leslie J. Lawless
 Gail Lee
 M. Patricia Leuschen
 Rochelle (Rocky) M. Lewis
 Sandra Neely and Patrick Lhermitte
 Anne C. and T. Geoffrey Lieben
 Tom D. Liefer
 Erin and Michael Limas
 Sheila and James Lincoln
 Katie and James Linder
 Lora Damme and Jay Longinaker
 Patricia and Charles Lontor
 Marjorie Benson Loring
 J. Terry MacNamara
 Debi and John Mackiel
 Michael Mahoney
 Sally G. and Edward M. Malashock
 Carolina Y. and Michael S. Mapes
 Robert H. Marks



Russia's Age of Elegance Members Opening, June 4

Pat and Charles J. Marr
 Sally and Richard P. Marshall
 Louis C. Martin
 Robert J. Martin
 Caryl and Jose Martinez
 Joan and Robert Masterson
 Barbara L. Maus
 Mary M. and Charles F. Maxwell, Jr.
 Jazmyn McDonald
 Ann and James E. McGill
 Joan and Earl J. McLean
 Grace L. and Cynthia Anne McMillan
 Norma and Darrell McNamara
 Kurtis Meyer
 Lois and Myron H. Milder
 William and Anne Millea
 Patricia A. and Peter W. Miller
 Rebecca Rae Anderson and William C. Minier
 Regina and John Minton
 Mary R. and James J. Montequin
 Gerald Moore
 James Morgan
 Arlis and Phillip E. Morrison
 Dorothy and William E. Morrow, Jr.
 Jolene M. and Bruce A. Moseman
 Nancy Morris and Joseph B. Muller
 Joani and Michael G. Mullin
 Elvira Garcia and Gordon Mundell
 Natalya and William Murphy
 Beverly and Robert Murray
 Ann and Kevin Naylor
 Laura-Lee and Howard W. Needelman

Kathy W. and George E. Nelson
 Barbara A. and Michel E. Nelson
 Marita J. and Thomas V. Neumann
 Patricia K. and William J. Newman, Sr.
 Anna C. Nolan
 Sandra L. Nolle
 Victoria L. and Robert B. Northrup
 Renee and Richard O'Brien
 Frederic P. Ogren
 Lynette S. and Matt R. Olsen
 Sybil G. and Evan E. Olson
 Connie J. and H. Don Osborne
 Dorothy and Rolland Otis
 Harriett and William L. Otis
 William R. Palmer
 Jennifer and Thomas Pansing Jr.
 Ann and Raymond Pape
 Jane and Rick Parod
 Frances (Frankie) and John C. Parrott, III
 Elna W. and Robert E. Peirce
 Letitia and John Pemberton
 Jean Ann Ballinger and Ward D. Peters
 Allison and Gary Petersen
 L. (Lois) Victoria Peterson
 Julie and Eric Phillips
 Joy A. Pillard
 Eleanor M. Plumb
 Bev and Kennard Pohlman
 Karen F. and Oliver B. Pollak
 Linda and Bill Pratt
 Vicki Pratt
 Sandra and Jane Price
 Kelly and Patrick Ptacek

Laura Rachwalik
 Sara and Gary W. Radil
 Andrew Rasmussen
 Betty C. and Hans Rath
 Thomas D. Reppart
 Katherine Rhea
 Nick Richter
 Susanne Shore and Pete Ricketts
 Silvia and Larry E. Roffman
 Jane and Carl H. Rohman
 Debra J. Romberger
 Fran and J. Emmet Root
 Nancy A. and Jim E. Rosenthal
 Lois and Ronald W. Roskens
 George Rozmarin
 Julia and Joel Russell
 Ruth and John C. Sage
 Patricia and Joe Samson
 Carolyn and Greg Samuelson
 Jill Sanders
 Rose Marie and Harold Dean Sapp
 Helen and Stephen Sawtell
 J.G. Schaaf
 Jeri and William Schlueter
 Thomas F. Schminke
 Rick Schreiber
 Hayes and Gilbert C. Schreiner
 Nancy K. and Phillip F. Schroeder
 Alcyone M. Scott
 Dianne M. and John A. Scott
 Greg Severson
 Ann and Bruce Shackman
 James T. Shaw
 Usha and Dan Sherman
 Ann and Don Sherman
 Laura and William Shiffermiller
 Kay Shilling
 Karen Shuler
 Lonnie Shumate
 F. Miles Skultety
 Teddi and Timothy Slattery
 Dorothy D. and Greg T. Sloma
 Patricia K. and Sanford V. Smith
 Pam J. and Jim F. Sorrell
 Shirley A. and Michael F. Sorrell
 Connie H. and Richard H. Spellman
 Elaine Spire
 Denese H. and Thomas D. Stalnaker
 Dorothy I. and David Stern
 Julie and Morgan Strattan
 Jane Carnazzo and Robert Stutzman
 Robert Benzel and Gerry Sullivan
 Donna D. Sulskis
 Karen J. and Robert R. Sundell
 Ginger Swinehart

Charles Szmrecsanyi
 Jane F. and Michael J. Tan Creti
 Sherry A. and Jeffrey Taxman
 Ann M. and Jon G. Taylor
 Jan Thelen
 Nicole Theophilus
 Carol and Gary L. Thompson
 Karen and Gary N. Thompson
 Susan K. Thornton
 Nancy and Alan Thorson
 Jean and Millard R. Thurmond
 Ann E. and Andy Titus
 Kay B. and Charles R. Tomek
 Kathy L. and Robert C. Townsend
 Irene and Donald Treaster
 Suz and Steve Trusty
 Dorothy and Dean J. Tuma
 Barbara M. and Milo P. Vacanti
 Carol A. and John Valdrighi
 Carol B. and David U. Van Metre
 Denise Kolbet and Michelle
 VanderWoude
 Nancy J. and Kevin D. Vaughan
 Barbara J. Velinsky
 Linda F. and Lewis N. Verner
 John A. Vifquain
 Diane Riibe-Virant and Ed C. Virant
 Edward J. Walsh
 Virginia and Thomas Walsh
 Donna Walter
 Vicki and Dean Wampler
 Marcus Ward
 Bette L. Weekly
 Kenneth Weiner
 Patti Jo and Dennis Weiss
 Kent N. Whinnery
 J. Todd White
 Donna G. and William T. Whitesel
 Deborah A. and Robert S. Wigton
 Norma J. Hansen and Kerry T.
 Winterer
 Barbara and Gary D. Woods
 Marek A. Wozniak
 Irene A. Zimmerman
 Robert Zimmerman
 Charlotte and Morley Zipursky
 Mary H. and Michael K. Zlomke

*Joslyn Art Museum extends a sincere apology
 to anyone whose name may have been
 inadvertently omitted from the Volunteers,
 Donors, Collectors' Groups, and Patron
 and Contributor Members lists.*

FINANCIAL STATEMENTS

Combined Statement of Financial Position December 31, 2005

Assets

Cash and cash equivalents	\$	2,328,493
Accrued interest receivable		249,581
Receivables		58,180
Museum shop inventory		264,562
Prepaid expenses and other assets		427,964
Contributions receivable:		
Heritage Services		2,144,932
Other		764,528
Funds on deposit under bond resolution		3,638,367
Investments		22,986,510
Property, net		23,932,302
Art collection		43,618,414
Assets held under deferred compensation program		<u>369,953</u>
Total assets	\$	<u>101,783,786</u>

Liabilities and Net Assets

Liabilities:

Accounts payable and accrued liabilities	\$	507,669
Notes payable—Heritage Services		298,035
Bonds payable		7,000,000
Payable under deferred compensation program		<u>369,953</u>
Total liabilities		<u>8,175,657</u>

Net assets:

Unrestricted:		
Undesignated		71,149,848
Designated by Board		7,001,885
Donor restricted:		
Temporarily		4,113,268
Permanently		<u>11,343,128</u>
Total net assets		<u>93,608,129</u>
Total liabilities and net assets	\$	<u>101,783,786</u>

Combined Statement of Activities
Year ended December 31, 2005

	Unrestricted	Temporarily restricted	Permanently restricted	Total
Revenues:				
Contributions and grants	\$ 3,697,737	1,410,855	185,000	5,293,592
Contributions of art	615,059	—	—	615,059
Admissions	128,701	—	—	128,701
Memberships	272,027	—	—	272,027
Bodmer Society	182,792	—	—	182,792
Contemporary Art Society	47,777	—	—	47,777
Education programs	75,943	—	—	75,943
Auxiliary services:				
Food service and facility rental	595,582	—	—	595,582
Museum shop	477,637	—	—	477,637
Association groups	215,279	—	—	215,279
Music series	48,297	—	—	48,297
Interest and investment income	1,294,909	184,795	11,846	1,491,550
Realized gain on investments	146,048	16,806	—	162,854
Unrealized loss on investments	(493,164)	(97,290)	—	(590,454)
Miscellaneous	71,342	—	—	71,342
Net assets released from restrictions:				
Satisfaction of operating restrictions	1,331,294	(1,331,294)	—	—
Satisfaction of program restrictions	419,017	(419,017)	—	—
Total revenues	9,126,277	(235,145)	196,846	9,087,978
Expenses:				
Administration	1,578,709	—	—	1,578,709
Curatorial	1,337,664	—	—	1,337,664
Education	444,683	—	—	444,683
Development	727,975	—	—	727,975
Auxiliary services	890,677	—	—	890,677
Physical plant	1,849,802	—	—	1,849,802
Depreciation	276,997	—	—	276,997
Total expenses	7,106,507	—	—	7,106,507
Change in net assets	2,019,770	(235,145)	196,846	1,981,471
Net assets, beginning of year	76,131,963	4,348,413	11,146,282	91,626,658
Net assets, end of year	\$ 78,151,733	4,113,268	11,343,128	93,608,129

STAFF

as of December 31, 2005

Office of the Director

J. Brooks Joyner
Director
Sara Jacobson
Assistant to the Director

Curatorial

John Wilson
Director of Curatorial
Affairs/Curator of
European Art
Ruby C. Hagerbaumer
Coordinator of Curatorial
Affairs
Steve Witte
Editorial Coordinator,
Maximilian Journals
Project, Durham Center for
Western Studies
Marsha Gallagher
Curatorial Advisor*

Education

Nancy Round
Interim Curator of
Education/Assistant
Curator of Education-
Family & Community
Programs*
Margaret Proskovec
Assistant Curator of
Education-Docents &
School Programs
Susie Severson
Assistant Curator of
Education-Outreach &
Special Programs*
Peter Fankhauser
Outreach Assistant*
Molly Zimmer
Education Assistant
Molly Mangimelli
Teaching Specialist
Claudia Alvarez
Fairouz Bishara
Jeremy Caniglia
Stephanie Carlson-Pruch
Carole DeBuse
Steven Elliott
Ellie Greenspoon
Michelle Hayes-Roddy
Leslie Iwai
CaSandra Johnson
Nancy Light Johnson
Diane Lounsberry-Williams
Matt Lowe
Linda Meigs
John Miller
Troy Muller
Kristin Pluhacek
Julie Ryan
Barbara Schroeder

Therese Straseski
Ron Sykes
John Thein
Kerri Voss
Doug Warden
Museum Teachers*
Courtney Wheat
Education Specialist/
Scott Education
Technology Gallery
Laura Huntimer
Jaci Siemers
Education Assistants/
Scott Education
Technology Gallery*

Collections & Exhibitions Management

Theodore W. James
Collections & Exhibitions
Manager
Penelope Smith
Collections Registrar
Michael Tegland
Preparator
Adam Findley
Assistant Preparator

Marketing & Public Relations

Linda Rajceвич
Director of Marketing &
Public Relations
Amy Rummel
Communications Manager
Barbara Bowerman
Visitor & Volunteer
Services Coordinator
Jackie Thorstad
Marketing & Public
Relations Assistant
Patty Schwartzbeck
Receptionist/Secretary
Margaret Lim
Music Series Coordinator*

Membership

Rozlyn Broniecki
Membership Director
Judi Stecki
Membership Specialist

Business Office

Miranda Templeman
Controller
Kathleen Cepuran
Accounts Payable
Specialist
Sherrl Urbanek
Accounts Receivable
Specialist
Chuck Chylinski
Human Resources Manager

Information Systems

Matthew Crawford
IS Director
Michael Lechtenberger
IS Support Specialist

Hitchcock Museum Shop

Jane Precella
Museum Shop Director
Katherine Gazzetta
Museum Shop
Merchandising Associate*
Wendy Krecek
Museum Shop Sales
Associate/Special
Exhibition Merchandising
Coordinator*
Kay Armstrong
Jennifer Beckstead
Nicole Crawford
Heather Exley
Mary Krecek
Kathy Ludwig
Sallie Rada
Diann Rausch
Suzanne Riley
Mary C. Stevens
Sarah Wild
Museum Shop Sales
Associates*

Events

Deb Bacon
Events Director
JoAnn Evon
Events Coordinator
Randy Figura
Technical Director-
Stage/AV
Brian Sylvester
Assistant Technical
Director-Stage/AV

Operations

Steven Tlsty
Facility Manager
Building & Grounds
Jay Schwartzbeck
Building Engineer
Scott Orr
Building & Grounds
Manager
James Coffin
Leonard Pock
Assistant Custodial
Managers
Michael Anderla
Tammy Fossett
David Larsen
Michael McGinness
Josh Schoeller
Building Workers

Protection

Ron Rivers
Protection Administrator
Tyrone Eure
Douglas Gunn
William Lasky
Richard Newmaster
Protection Supervisors
Kathryn Quinn
Protection Officer/
Visitor Services Specialist
Theresa Cervantes
Nicholas Lambrecht
Lisa Nabity
Larry Oberdieck
Carl Overfield
Protection Officers/
Visitor Services Representatives
Michael Andsager
Eric deLaubenfels
Kimberlee Fountain
Linda Stapleton
Merry Stapleton
Protection Officers

Joslyn Art Museum Foundation

Sandra Reding
Director
Kelly Ptacek
Director of Development
Sabrina Weiss
Director of Patron Programs
Susan Nelson
Director of Foundation
Relations*
Candace Tielebein
Executive Assistant

*Part-time

 **JOSLYN**
Art Museum
2200 Dodge Street
Omaha, Nebraska 68102-1292

Non-Profit Org.
U.S. Postage
PAID
Permit No. 88
Omaha, Nebraska